

## **MEETING AGENDA**

aRT3 Planning Study

**Meeting Date:** Thursday, January 23, 2025  
8:15 am



**Location:** America's Central Port  
1635 West 1st Street, Granite City, IL 62040

**Purpose:** Advisory Committee Meeting #3

---

### **SUMMARY (See presentation for content)**

#### **A. Welcome and Introductions**

#### **B. Updates**

- Reminder about Resolutions of Support
- Other Updates

#### **C. Update to Transportation Recommendations**

- What we heard from Open House and stakeholders
- Updates to Transportation Plan
- Setting the Stage for Future IDOT Planning and Projects

#### **D. Art and Enhancements**

- Why Art and Enhancements are Important
- Areas of Opportunity
  - Potential areas
  - Precedent Examples
- Priority Areas
- Art Working Group (sub-committee)
- Advisory Committee Survey (homework)

#### **E. Upcoming Schedule**

- Late February/March: Art Working Group first meeting
- March: Final Transportation Improvements Plan
- April: Next Advisory Committee Meeting
- May: Corridor Open House #2
- June: Preliminary Art and Enhancement Plan

## **Committee Discussion and Feedback**

### ***Updates***

Committee members provided updates on upcoming art projects along the Route 3 corridor. MCT is collaborating with America's Central Port and IDOT to install a sculpture along the Confluence Trail as part of MCT's Trail Critter sculpture program. Brenda Whitaker announced recent funding that will support a sculpture installation on Niedringhaus Avenue.

The planning team reminded the committee that resolutions of support for plan recommendations will be an important part of the planning process.

### ***Updates to Transportation Recommendations***

The planning team provided an update on recent community engagement including:

Oct 17, 2024: Pop-up event at the library in Granite City

Oct 31, 2024: John Ervin Memorial Halloween Party

Nov 7, 2024: Open House for Route 3 Business and Property Owners

Marketing for the November 7, 2024, open house included an IDOT traffic message board and mailed invitations to approximately 300 property owners, businesses, and residents adjacent to Route 3.

Feedback from engagement activities highlighted the Pontoon Road and Missouri Avenue intersections, known as the "Walmart intersection," as the highest-priority concern, with general agreement that it is the corridor's most dangerous intersection. Reactions to proposed roundabouts were mostly positive or neutral, with attendees expressing interest in learning more about them. The Continuous Green-T proposal for Missouri Avenue and Northgate Industrial Drive was well received, as was the proposed road diet between McKinley Bridge and Rock Road, which many felt could help calm traffic. Some concerns were raised about Restricted Crossing U-turns (RCUTs) and Median U-turn (MUT) options. In response, the planning team included deceleration/acceleration lanes as an alternative. Many attendees also complimented the recent IDOT improvements at the Route 3 and 20th Street intersection

The planning team provided an update on transportation conceptual plans based on feedback from engagement activities and a coordination meeting with IDOT. Two overall options were presented (see presentation), with Option 1 identified as the preferred recommendation.

The final transportation plan is expected to be completed in March. A key component of the planning process will be recommending next steps, which are likely to include an Intersection Design Study (IDS) by IDOT. The final plan will also analyze how the proposed transportation options can accommodate future growth along the corridor. The committee briefly discussed the benefits of roundabouts, noting that they can often move traffic volumes more efficiently than signalized intersections and thus better accommodate future growth.

### ***Arts and Enhancements***

The planning team reviewed the importance of art and enhancements, showcasing examples of how other communities have used art to achieve the goals of the aRT3 plan: Safety, Cleanliness, Economic Vitality, Community Pride, and Enhanced Image.

Initial thoughts for opportunity areas along the corridor were discussed, including buildings (murals), infrastructure, right-of-way/parcel areas, and residential edges. Examples of transportation infrastructure projects in other areas were briefly highlighted, such as the I-255 corridor (Cahokia Mounds theme), and bridges on I-57 near Champaign and I-55 near Bolingbrook.

The I-270 and Route 3 intersection was identified as a consistently high-priority opportunity by the committee and during engagement events. With the scheduled replacement of the I-270 intersection, it represents a key entrance to the Route 3 corridor, Illinois, and Madison County. The planning team shared early thoughts for enhancements at this location, including opportunities for art, infrastructure improvements, and the potential for a welcome center near the intersection.

### ***Art Working Committee***

A five to six person art working committee will meet with the planning team two to three times this spring to help develop the art and enhancement plan. As of this summary, the committee includes Paul Hubbman, John Janek, Cory Jobe, Brenda Whitaker, and Thomas Wobbe. Advisory Committee members interested in joining the art working committee are encouraged to contact the planning team.

**Advisory Committee Members (Attending)**

Rich Barbee, IDOT  
Amy Elik, State Representative 111th District  
Tracey Glenn, Illinois Department of Commerce and Economic Opportunity  
Erica Harriss, State Senator 56th District  
Paul Hubbman, East-West Gateway Council of Governments  
John Janek, Madison County Board  
Holly Klausung, Madison County Economic Development  
Mary Lamie, St. Louis Regional Freightway District  
SJ Morrison, Madison County Transit  
John Nations, Doster Nations Ullom & Boyle, LLC  
Brenda Whitaker, Business Owner  
Dennis Wilmsmeyer, America's Central Port

**America's Central Port (Attending)**

Christie Voelker, America's Central Port

**Planning Team (Attending)**

Stephen Ibendahl, i5Group  
Katie McLaughlin, i5Group  
MaryAnn Taylor-Crate, Added Dimension  
Kayla Allen, Added Dimension  
Tom Cissell, Oates Associates  
Ryan Gueldener, Oates Associates  
Meridith McKinley, VIA Partnership  
Noah Kirby, Artist

*End of Meeting Summary:  
Last updated January 28, 2025, by the i5Group.*

Photo of Advisory Committee Meeting #3, January 23, 2025.





# aRT3

— PLANNING STUDY —

ADVISORY COMMITTEE  
MEETING #3  
January 23, 2025

# Agenda

## A. Welcome and Introductions

## B. Updates

- Reminder about Resolutions of Support
- Other Updates

## C. Update to Transportation Recommendations

- What we heard from Open House and stakeholders
- Updates to Transportation Plan
- Setting the Stage for Future IDOT Planning and Projects

## D. Art and Enhancements

- Why Art and Enhancements are Important
- Areas of Opportunity
  - Potential areas
  - Precedent Examples
- Priority Areas
- Art Working Group (sub-committee)
- Advisory Committee Survey (homework)

## E. Upcoming Schedule

- March: Final Transportation Improvements Plan
- April: Next Advisory Committee Meeting
- May: Corridor Open House #2
- June: Preliminary Art and Enhancement Plan

# Engagement to Date

Oct 17: Library in Granite City

Oct 31: John Ervin Memorial Halloween Party

Nov 7: Open House for Business and Property Owners





# Transportation: What We Heard

- “Walmart Intersection” (Pontoon Rd & Missouri Ave) highest priority.
- Positive Feedback
  - Roundabouts were viewed positively or neutral (willing to learn more).
  - Continuous Green-T.
  - Road Diet (consensus on calming traffic).
- Concerns
  - Restricted Crossing U-turns (RCUT) and Median U-turn (MUT) options.
- Compliments on IDOT improvements to the Route 3 and 20th Street intersection.



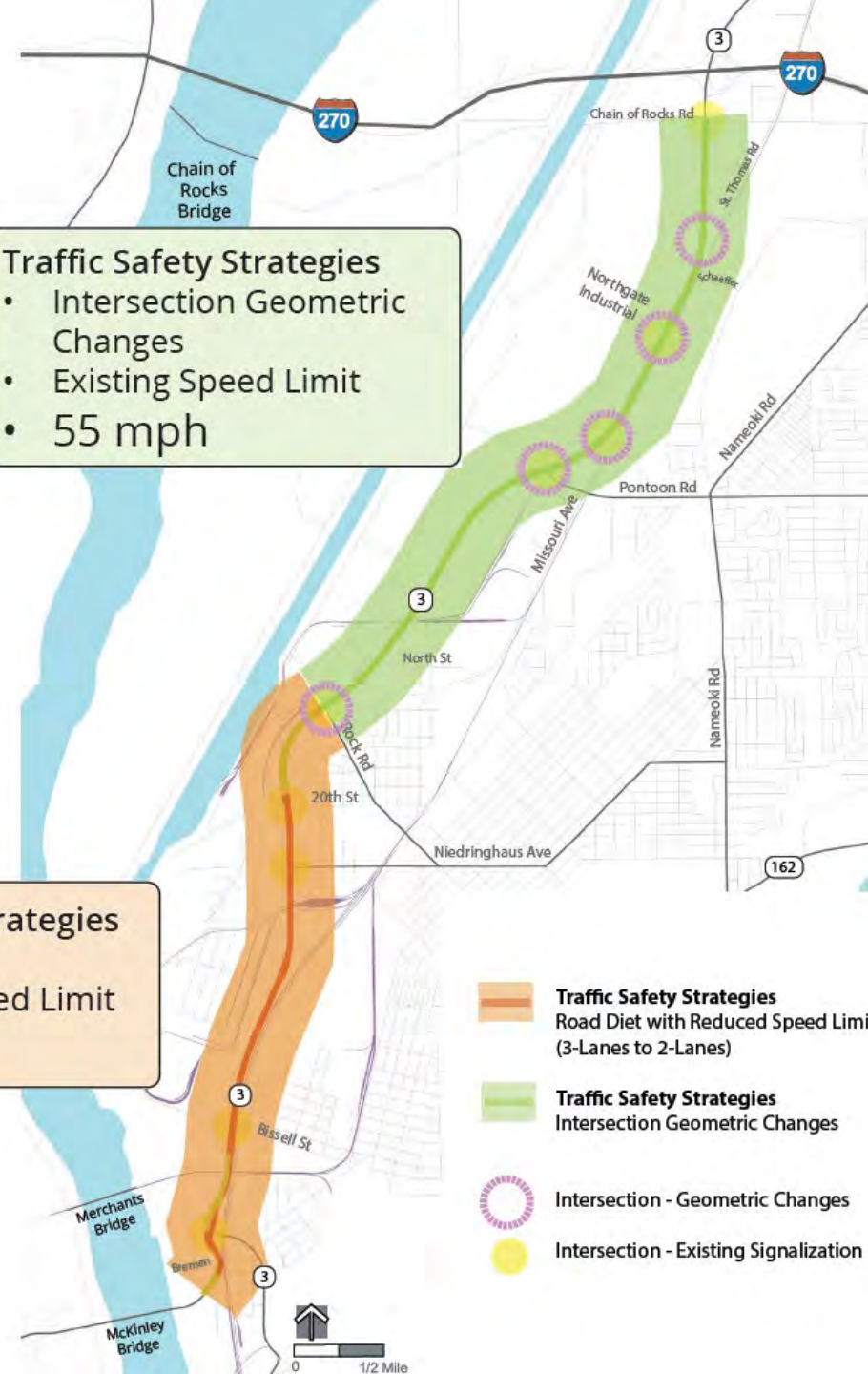
# Transportation:

## Traffic Safety Strategies

- Intersection Geometric Changes
- Existing Speed Limit
- 55 mph

## Traffic Safety Strategies

- Road Diet
- Reduced Speed Limit
- 45 mph



# Transportation: Option 1

## ■ Roundabouts

- Broadway
- Rock Rd
- Pontoon Rd

## ■ Continuous Green-T

- Missouri Ave
- Northgate Industrial

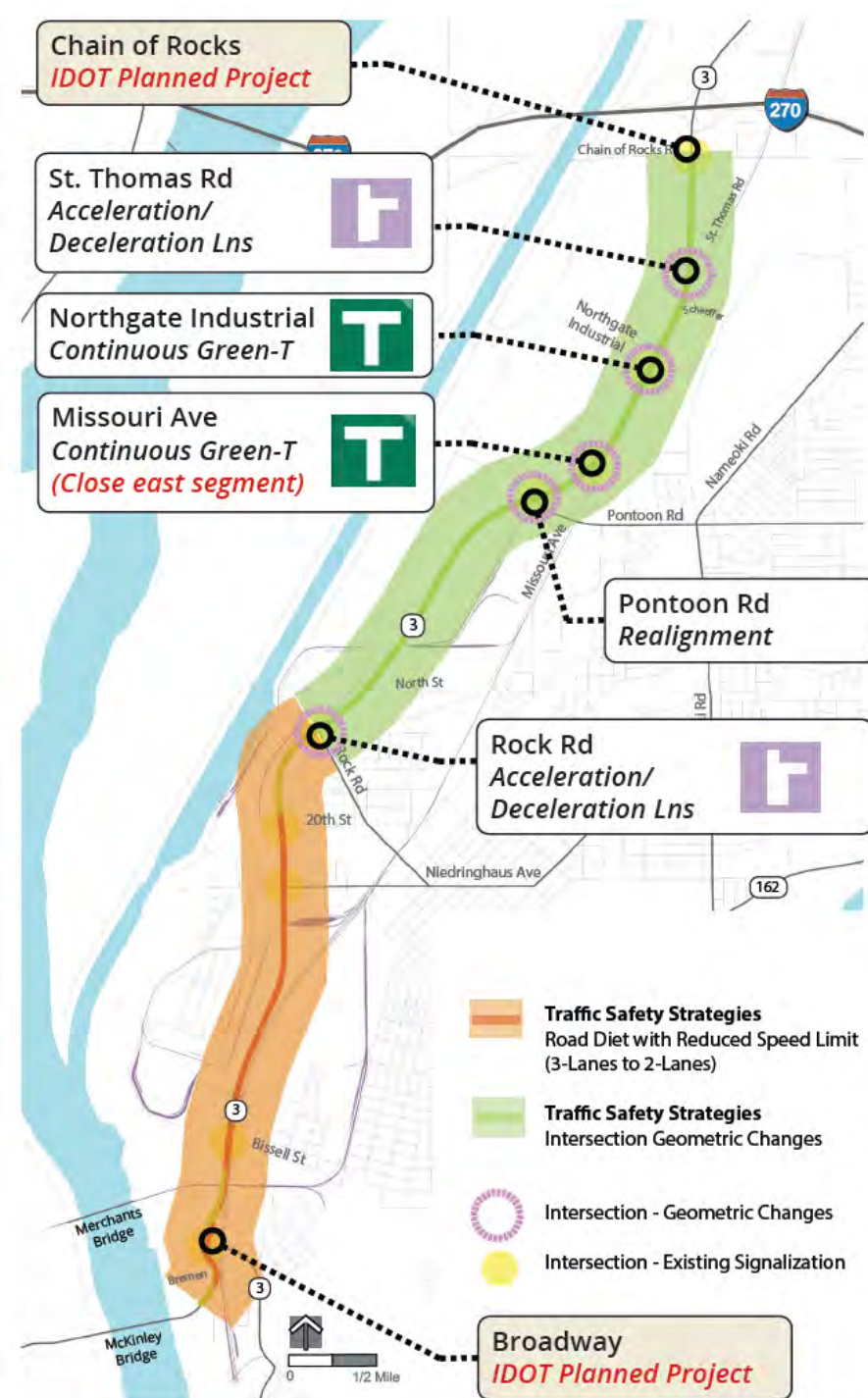
## ■ J-Turn

- St. Thomas Rd



# Transportation: Option 2

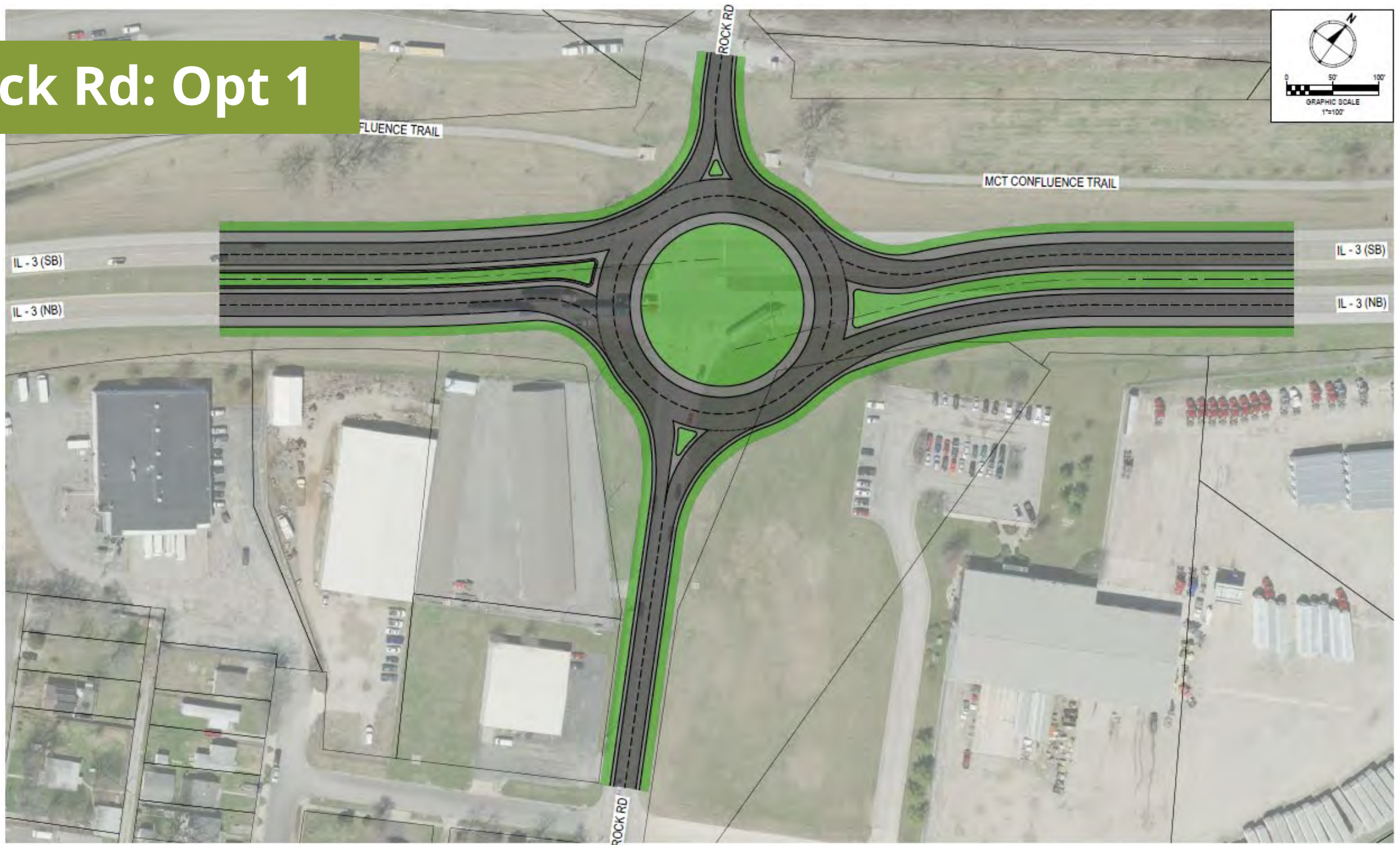
- Acceleration / Deceleration Lanes
  - Rock Road
  - St. Thomas Road
  
- Continuous Green-T (same as Opt 1)
  - Missouri Ave
  - Northgate Industrial
  
- Realignment
  - Pontoon Rd



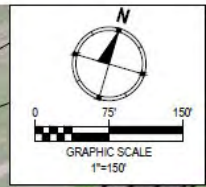
# Broadway



# Rock Rd: Opt 1

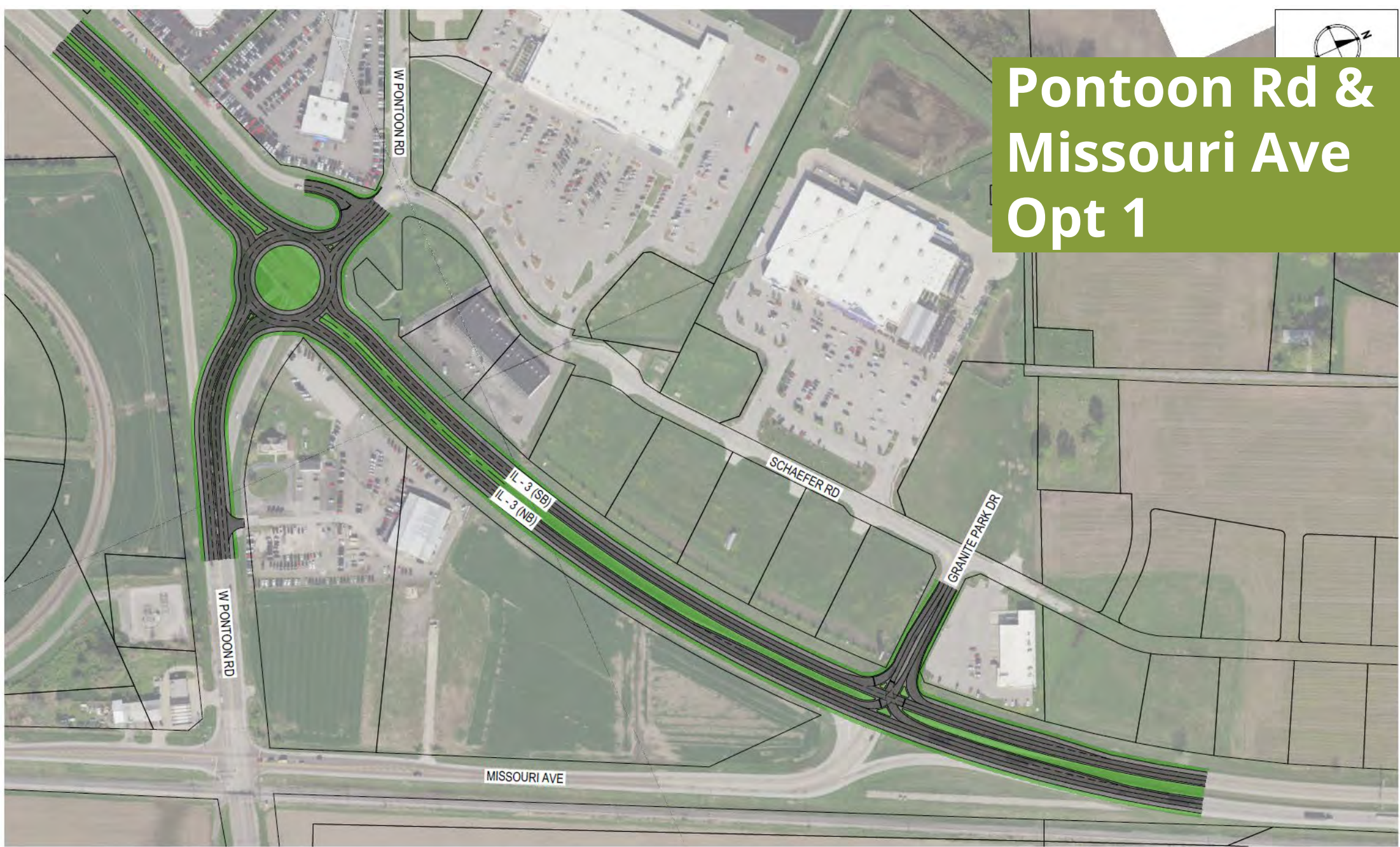


# Rock Rd: Opt 2





# Pontoon Rd & Missouri Ave Opt 1

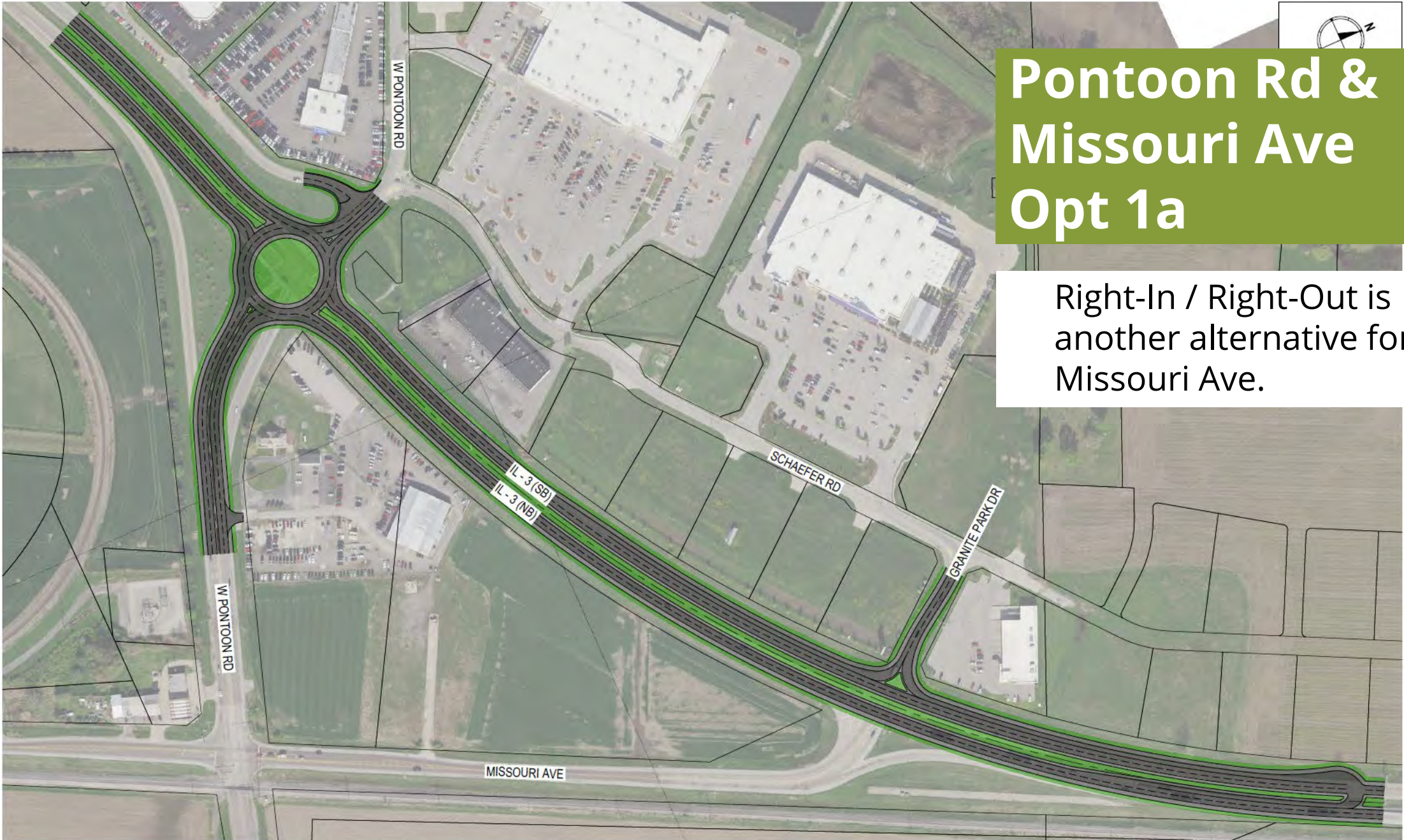






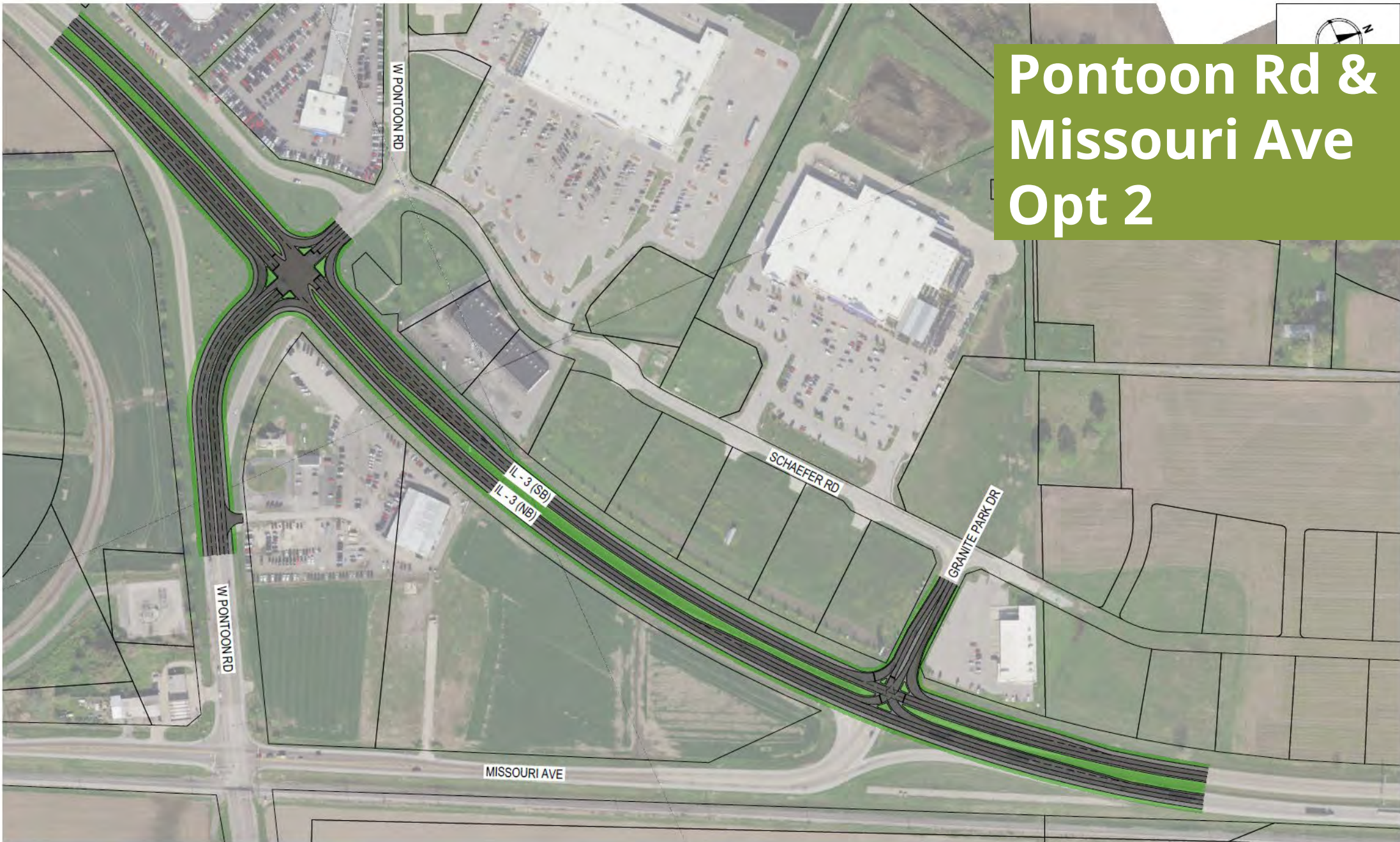
# Pontoon Rd & Missouri Ave Opt 1a

Right-In / Right-Out is another alternative for Missouri Ave.





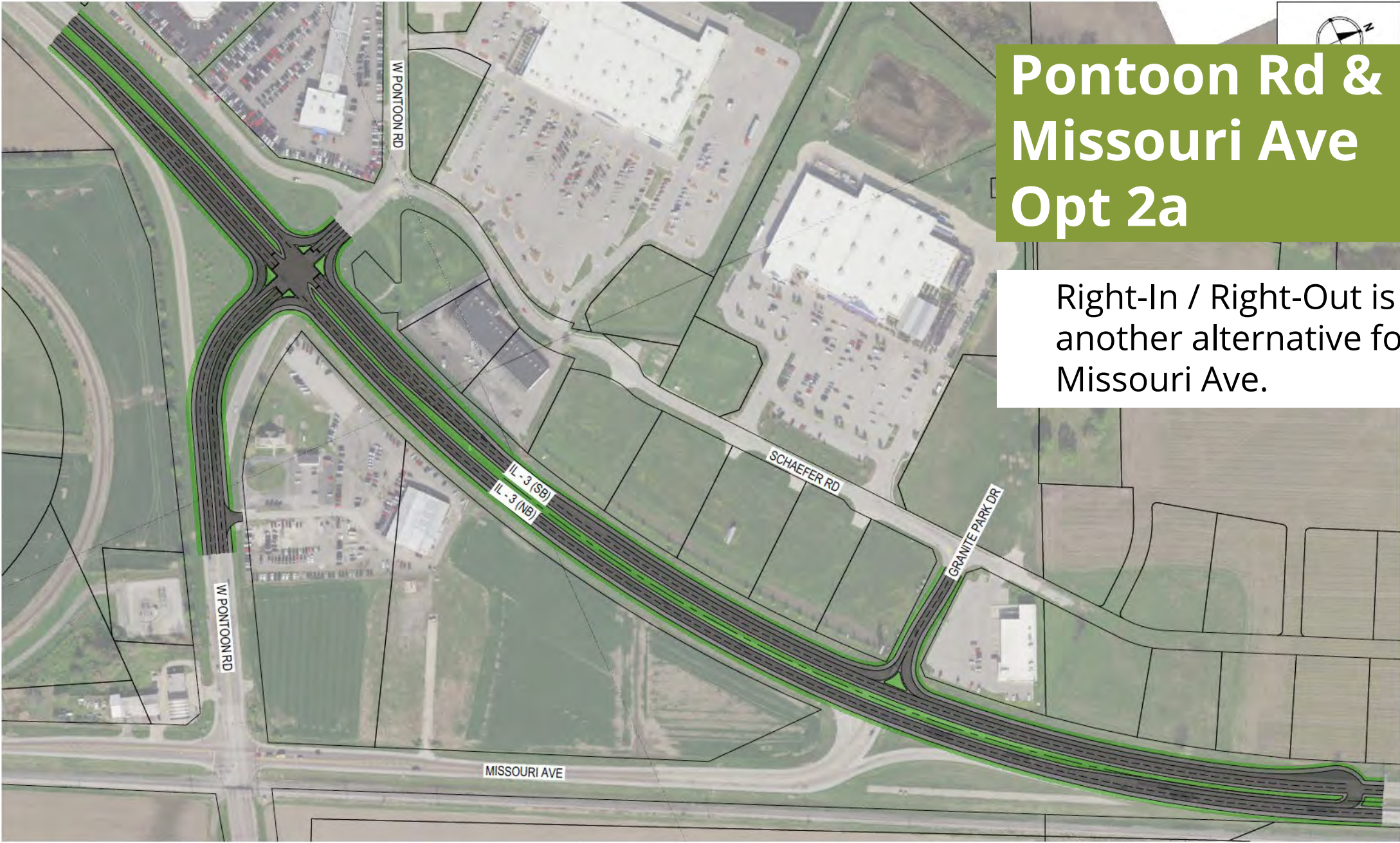
# Pontoon Rd & Missouri Ave Opt 2



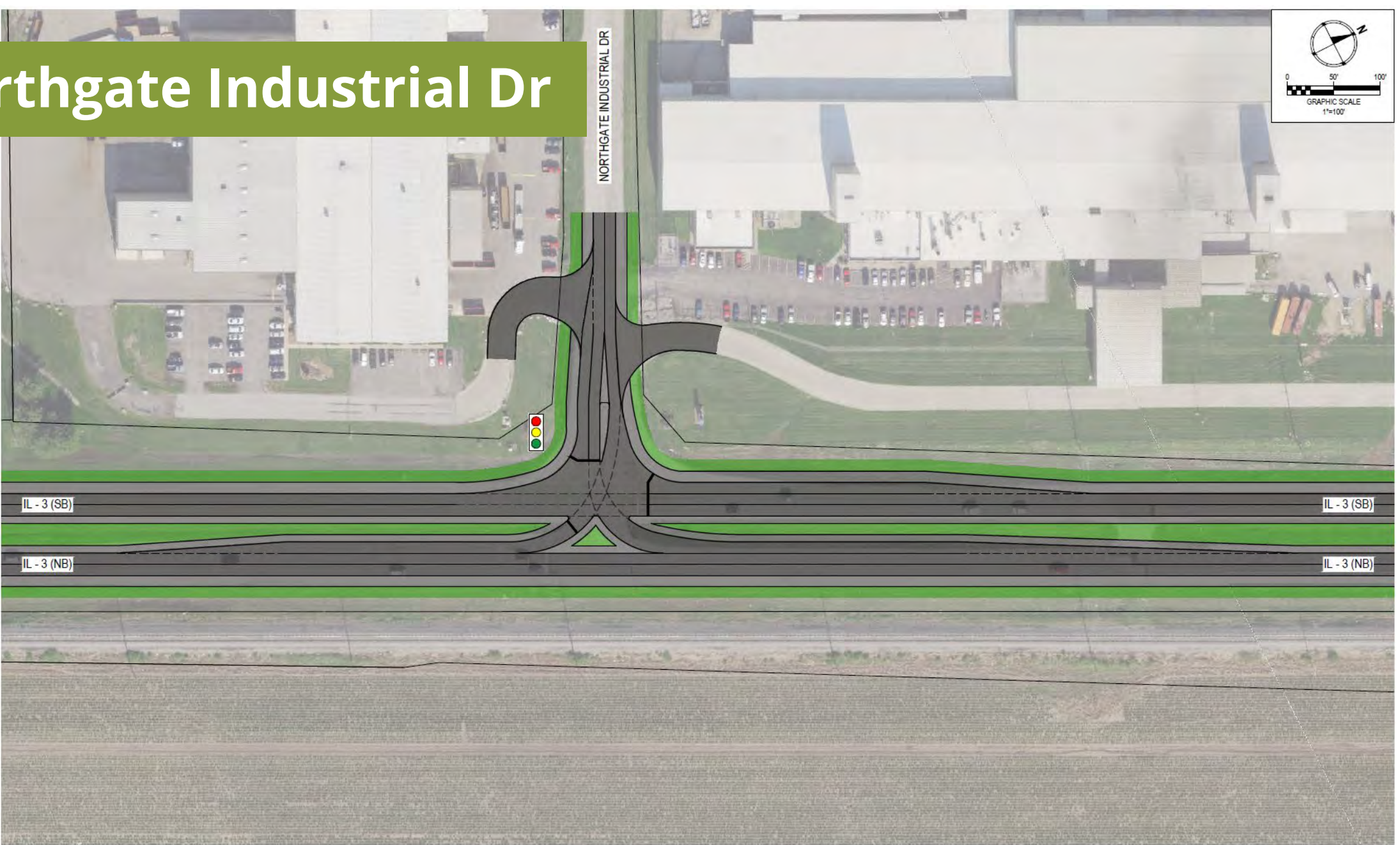
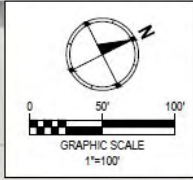


# Pontoon Rd & Missouri Ave Opt 2a

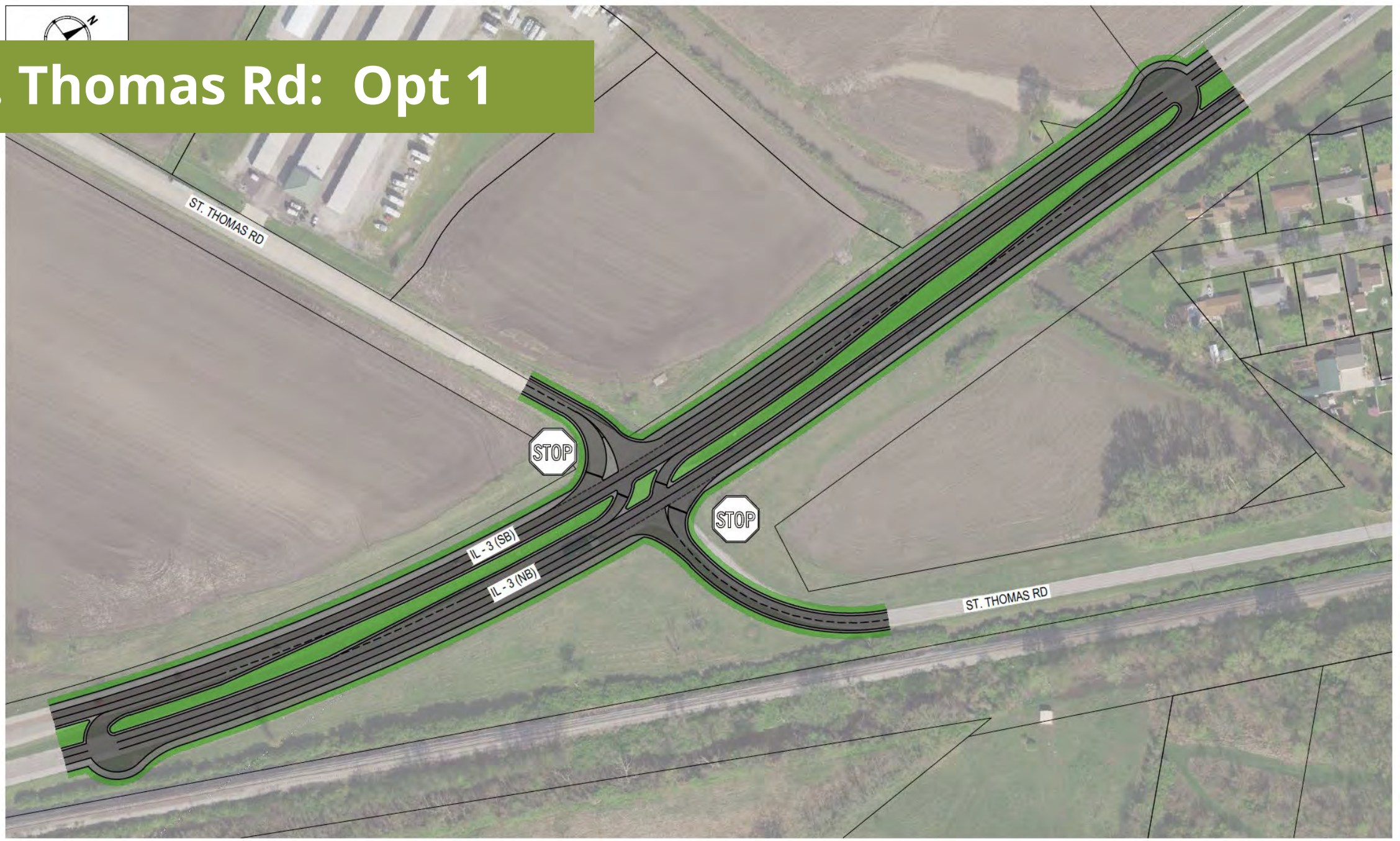
Right-In / Right-Out is another alternative for Missouri Ave.



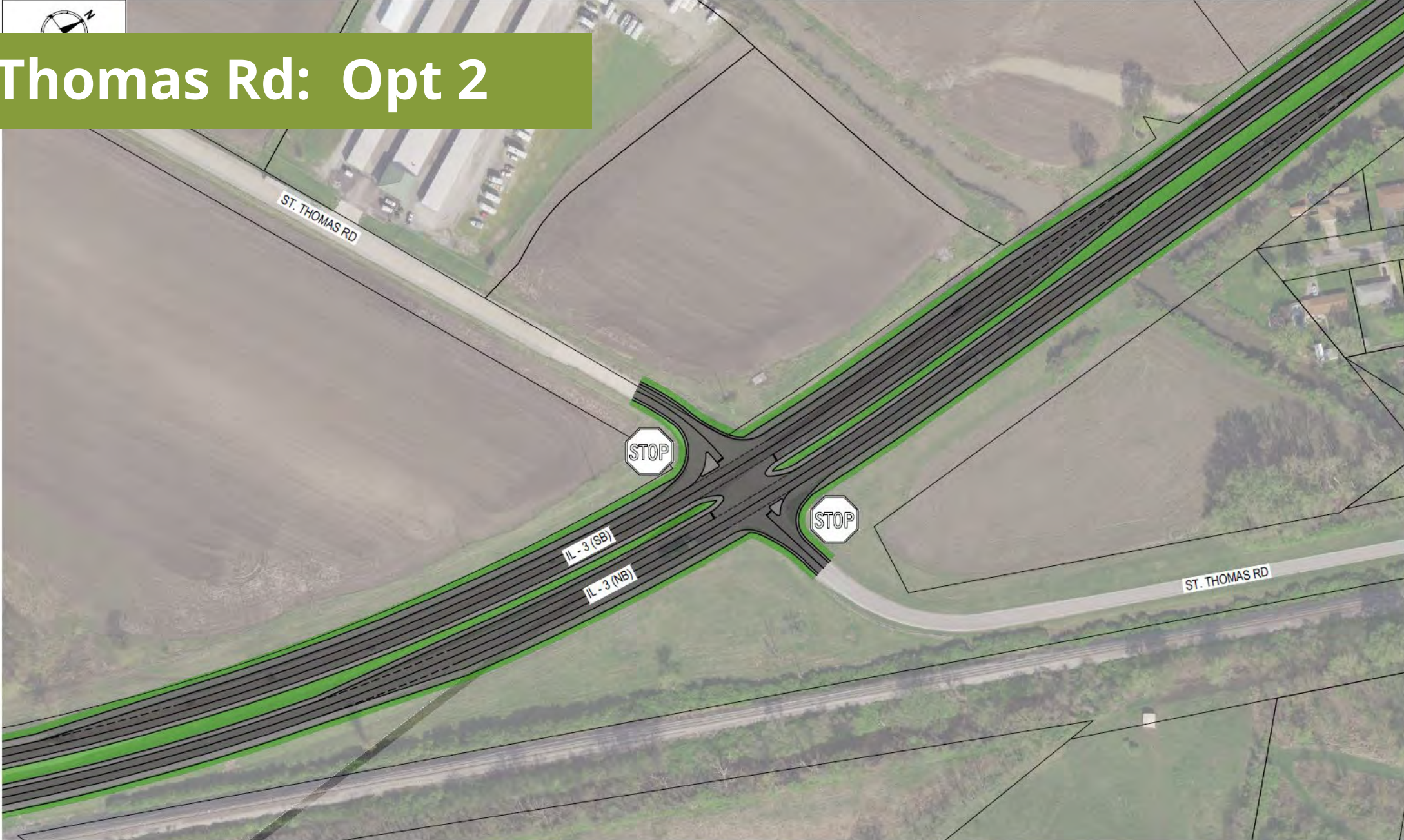
# Northgate Industrial Dr



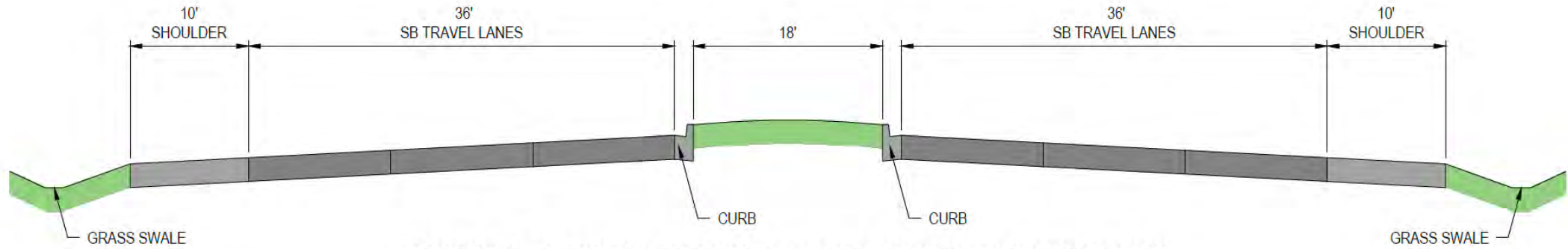
# St. Thomas Rd: Opt 1



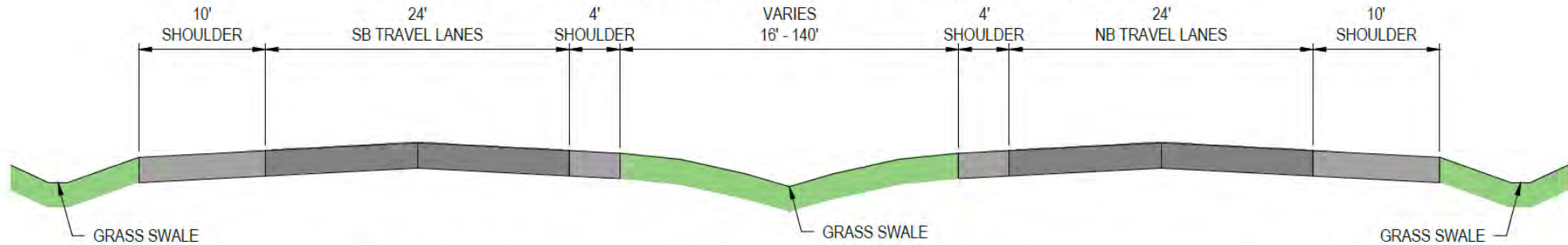
# St. Thomas Rd: Opt 2



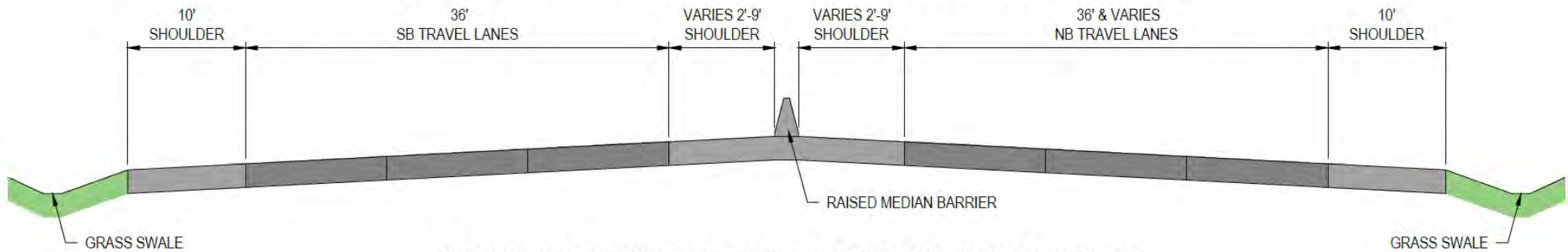
# Road Diet Segment: Existing Sections



**EXISTING IL-3 TYPICAL SECTION - 6 LANES AND RAISED GRASS MEDIAN**

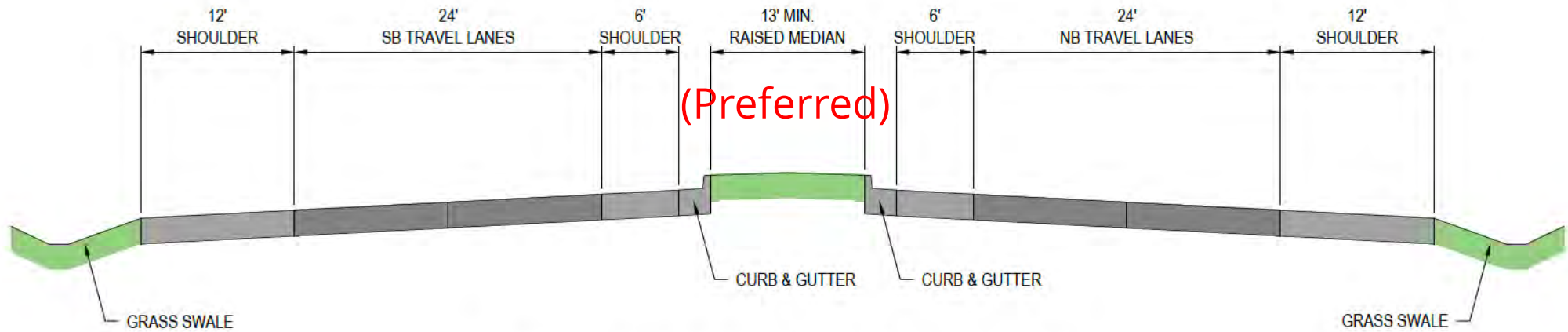


**EXISTING IL-3 TYPICAL SECTION - 4 LANES AND DEPRESSED GRASS MEDIAN**

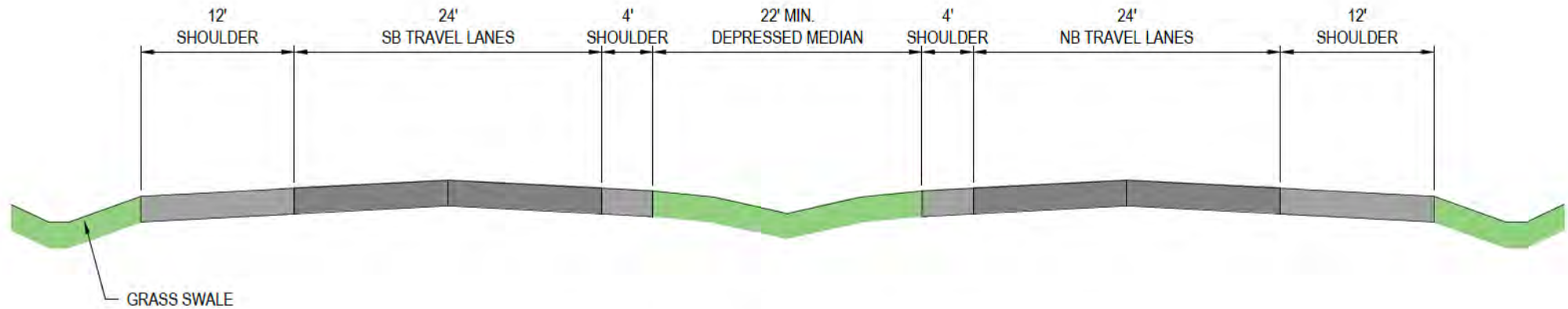


**EXISTING IL-3 TYPICAL SECTION - 6 LANES AND MEDIAN BARRIER**

# Road Diet Segment: Proposed



**PROPOSED IL-3 TYPICAL SECTION - RAISED MEDIAN**



**PROPOSED IL-3 TYPICAL SECTION - DEPRESSED MEDIAN**



# Transportation:

- Discussion / Questions
- March 2025
  - Final Transportation Plan
- Setting the Stage for Future IDOT Planning and Projects

# Art & Enhancements

# aRT3 Overall Goals

- **Safety**
- **Cleanliness**
- **Economic Vitality**
- **Community Pride**
- **Enhance the Image**



# aRT3 Overall Goals

- **Safety**
- **Cleanliness**
- **Economic Vitality**
- **Community Pride**
- **Enhance the Image**

How communities use art and design to address these goals?

Celebrate Identity

Stand Apart

Promote Continuity and Connectivity

Create Focal Points

Activate Community Spaces

Welcome Visitors



# CELEBRATE IDENTITY



Key Detail, *Power of the Titans*, 2021, North Kansas City, MO

# STAND APART



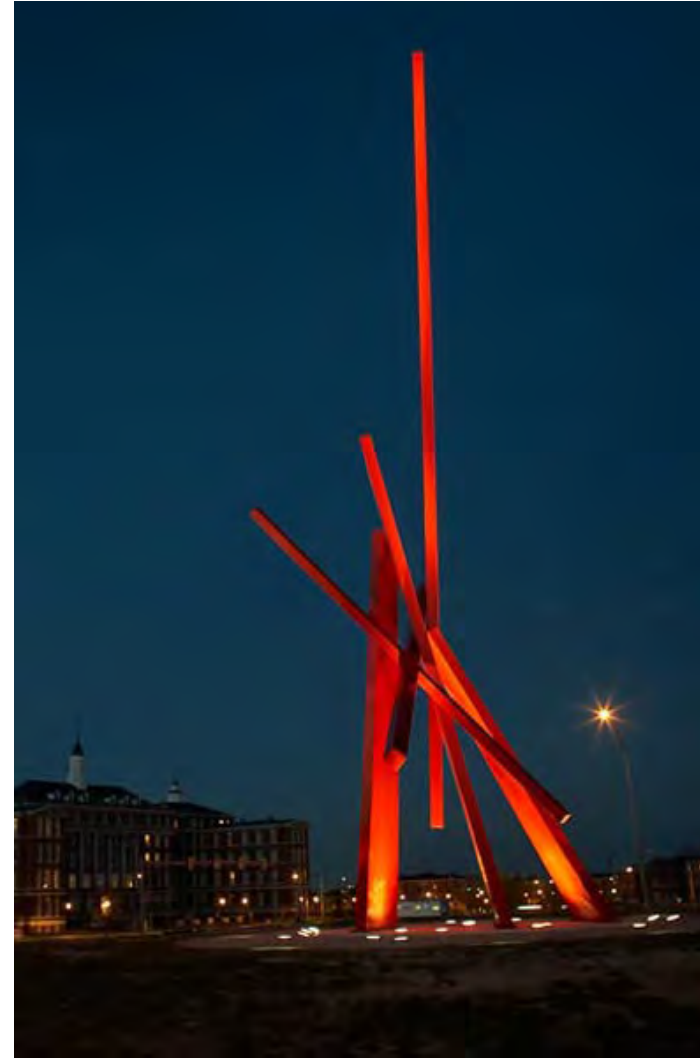
Art Farm, *Cadillac Ranch*, 1974, Amarillo, TX

# PROMOTE CONTINUEITY AND CONNECTIVITY



wayfinding and art

# CREATE FOCAL POINTS



John Henry, *Treeomonisha*, 2008, St. Louis, MO



# ACTIVATE COMMUNITY SPACES



Bob Cassilly, *Turtle Park*, 1996, St. Louis, MO

# WELCOME VISITORS



Janet Zweig, *If You Lived Here You'd Be Home*, 2007, Maplewood, MO

# Existing Route 3 Art



# aRT3 Aesthetic Goals

## ■ Themes

- Industry
- Transportation
- Nature
- Community

## ■ Materials / Palette

- Stone
- Steel
- Landscape
- Other

## What is the Identity of Route 3?



# Precedent: I-255

Horizontal band on bridge parapet.

Bridge girder color (earth tone).

Vertical pattern center pier.

Vertical pattern bridge abutment.

Patterned slope.

Cahokia Mounds imagery.

Patterned (stone) retaining wall.

Native grass.

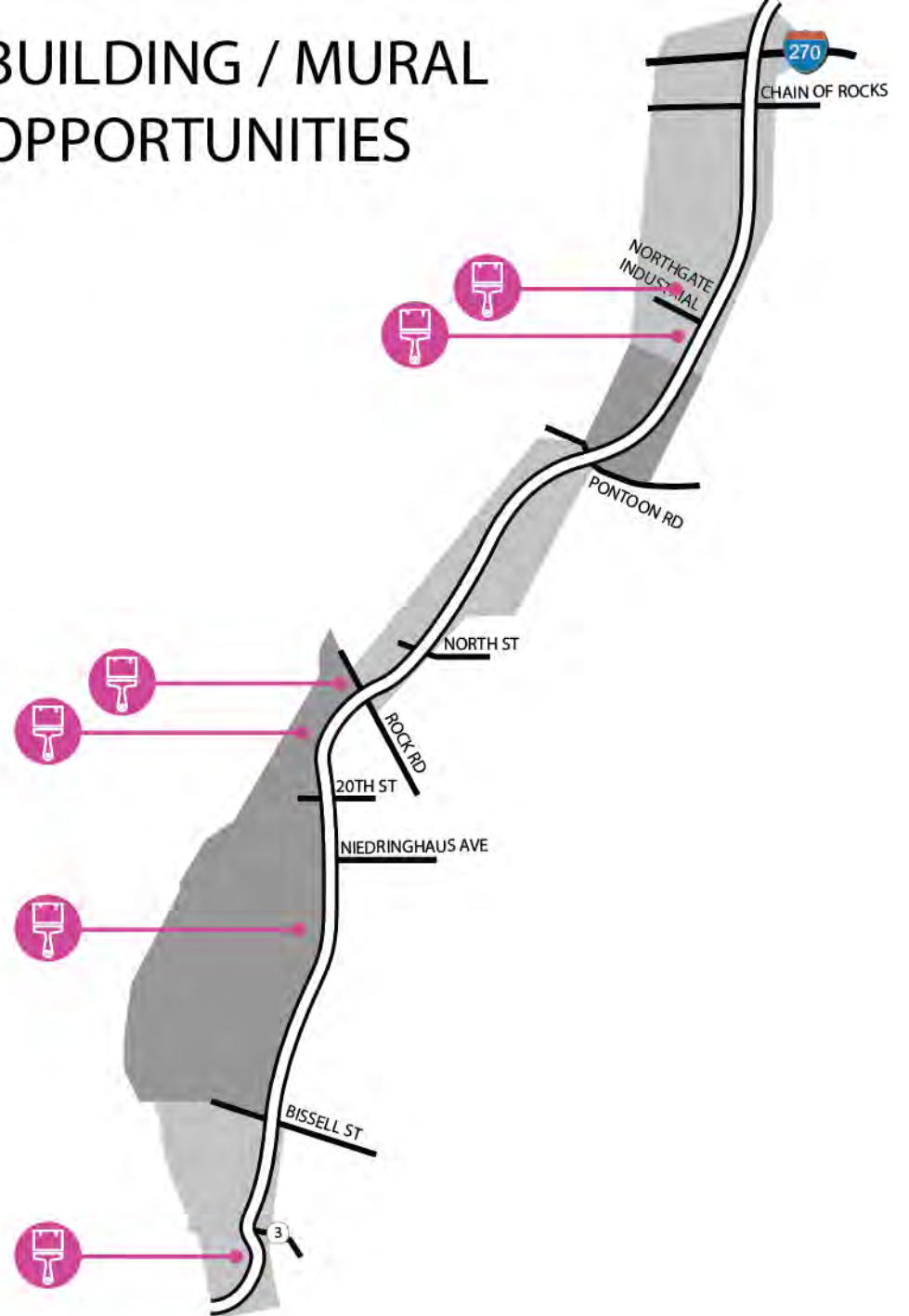


Left: Sign supports along I-255 have the same earth tone color as the bridge girders.

# Opportunities



## BUILDING / MURAL OPPORTUNITIES



# Opportunities



# Opportunities





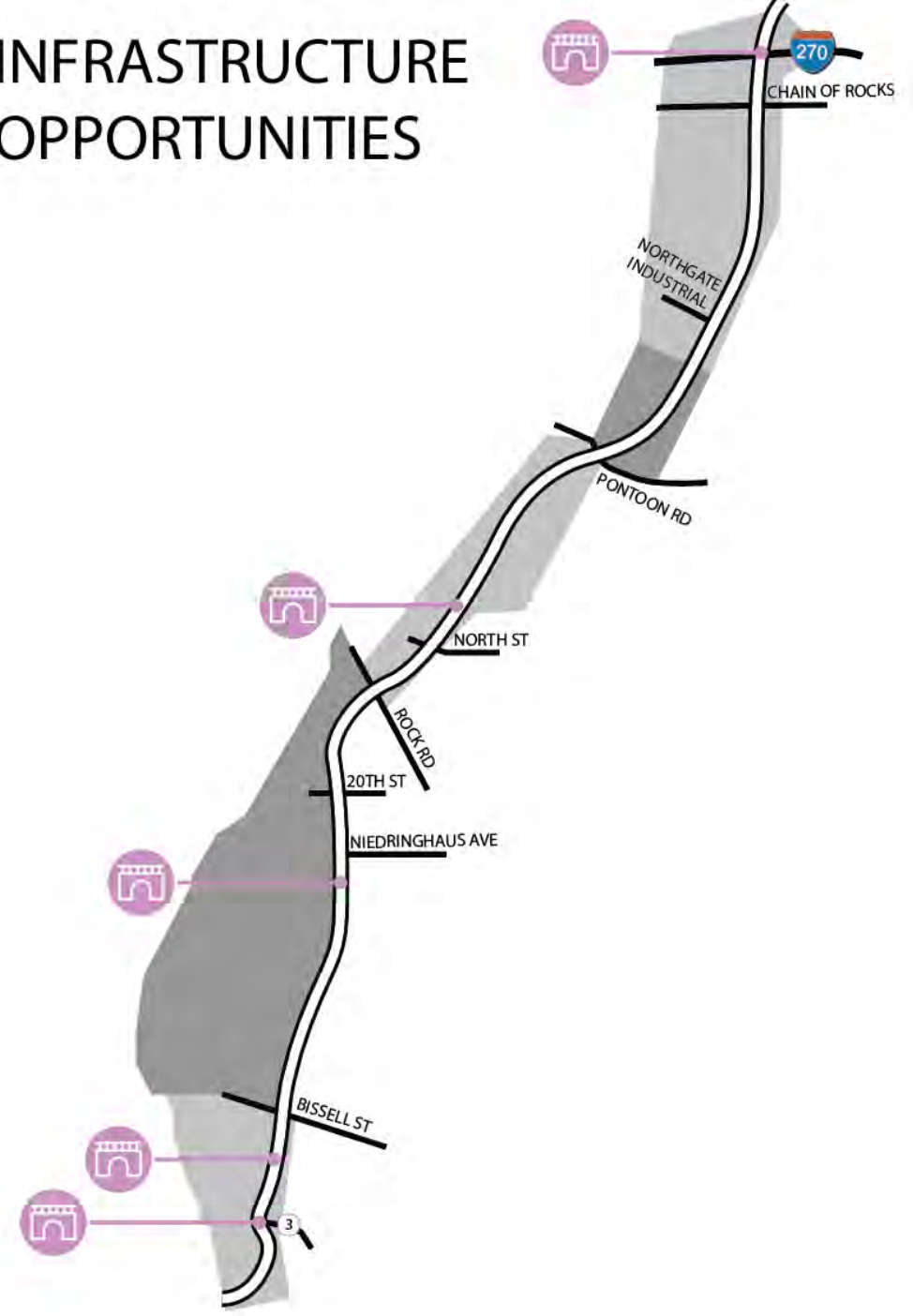
# Opportunities



# Opportunities



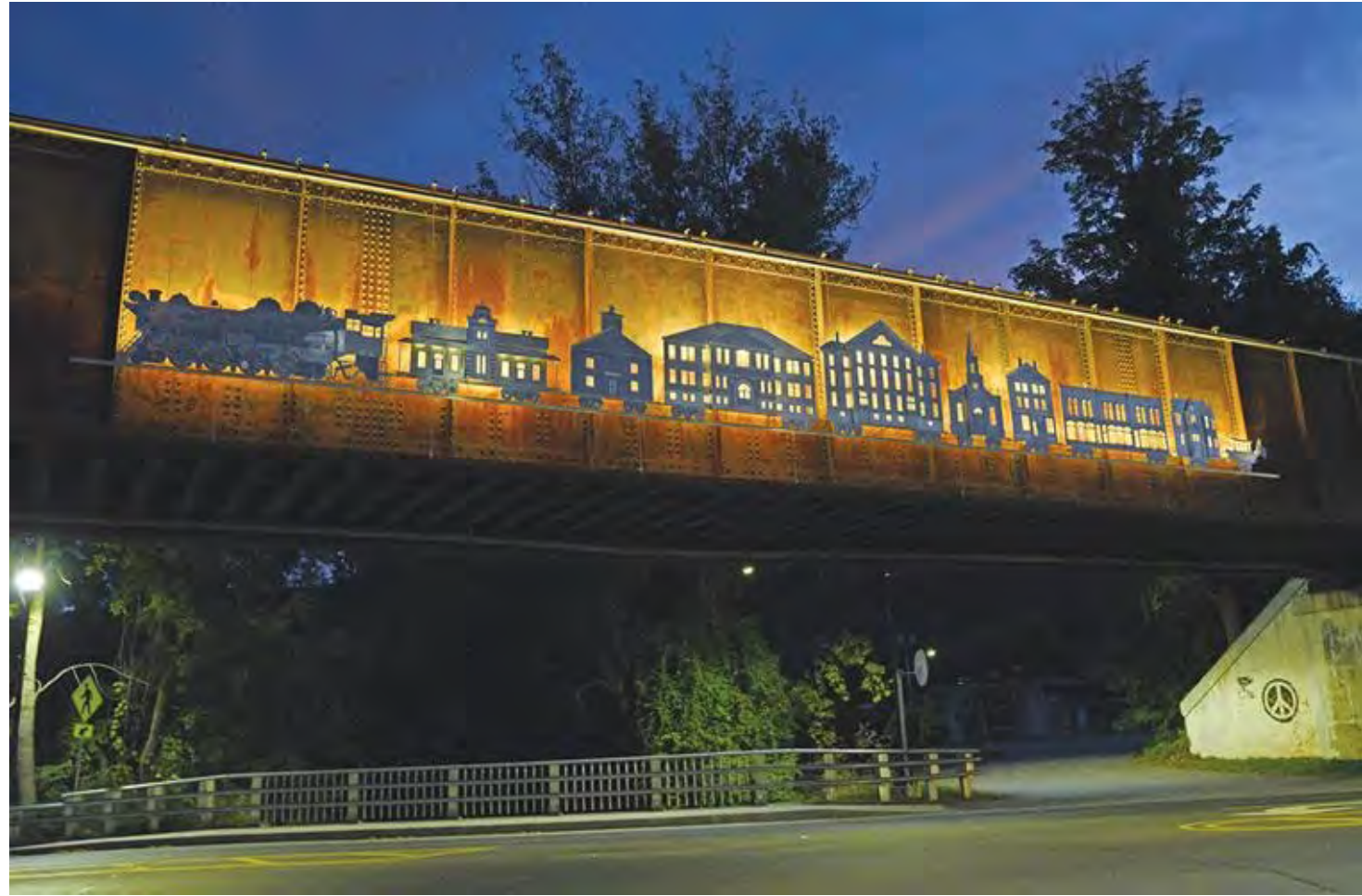
# INFRASTRUCTURE OPPORTUNITIES



# Opportunities



# Opportunities



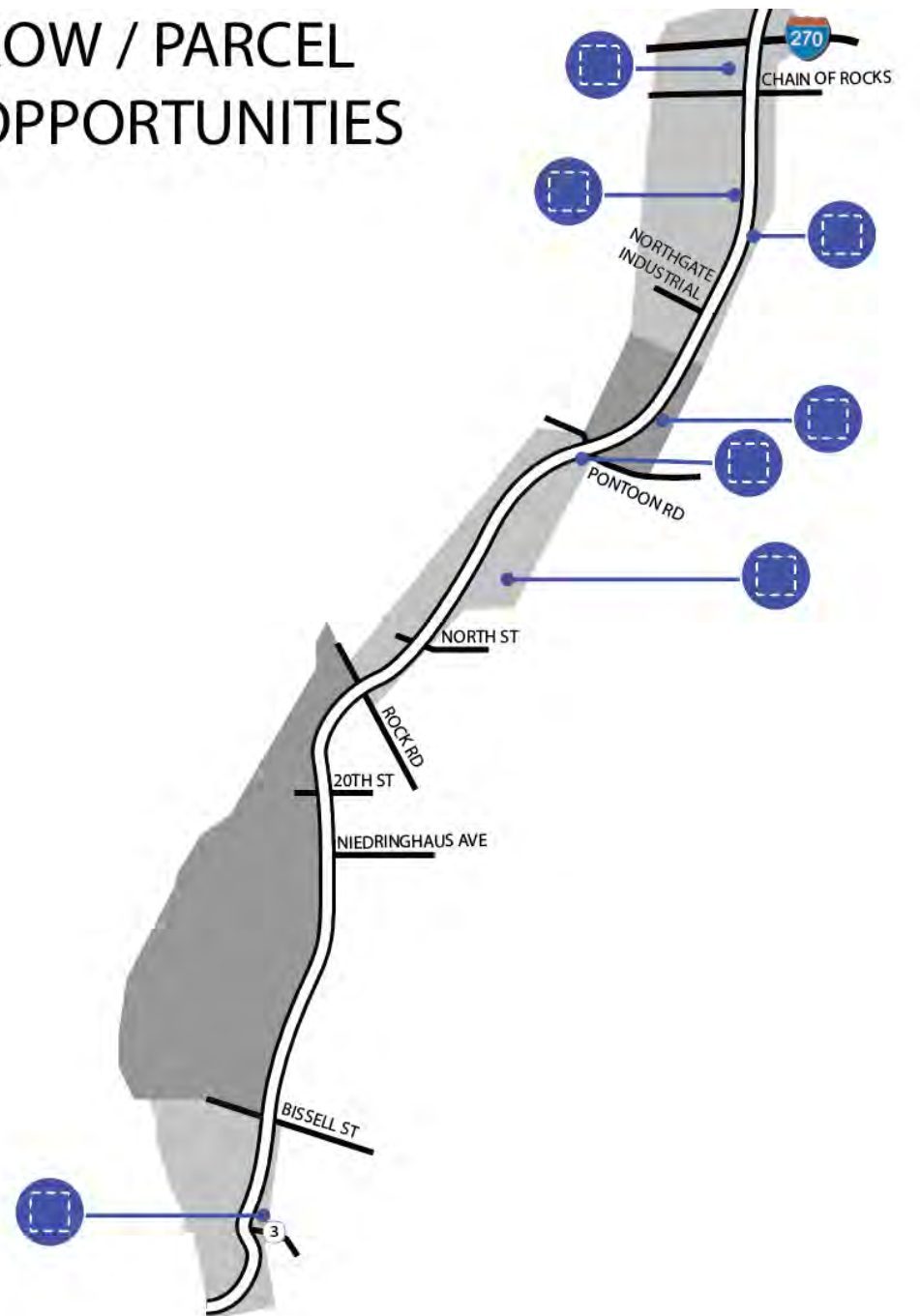
# Opportunities



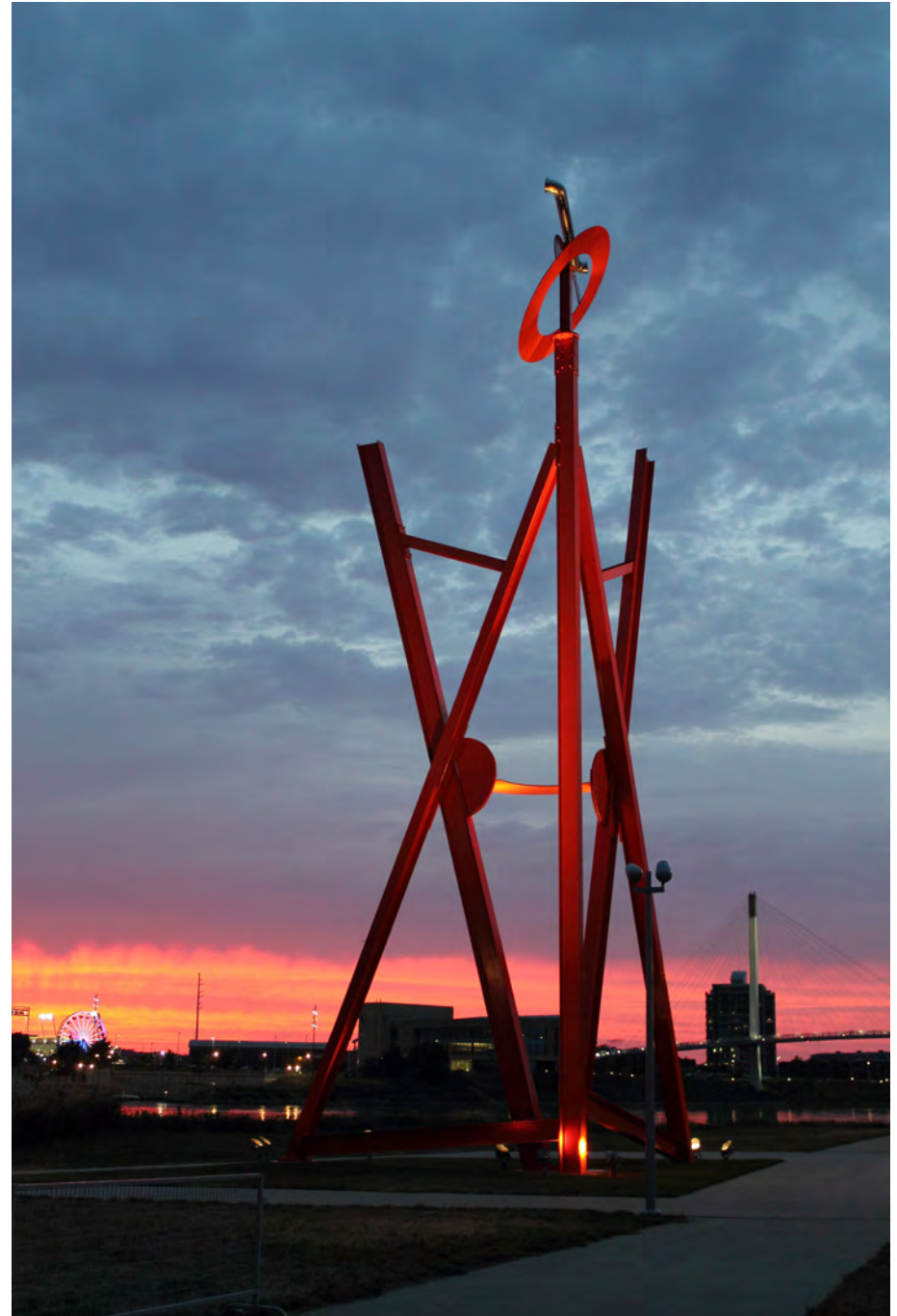
# Opportunities



## ROW / PARCEL OPPORTUNITIES



# Opportunities



# Opportunities

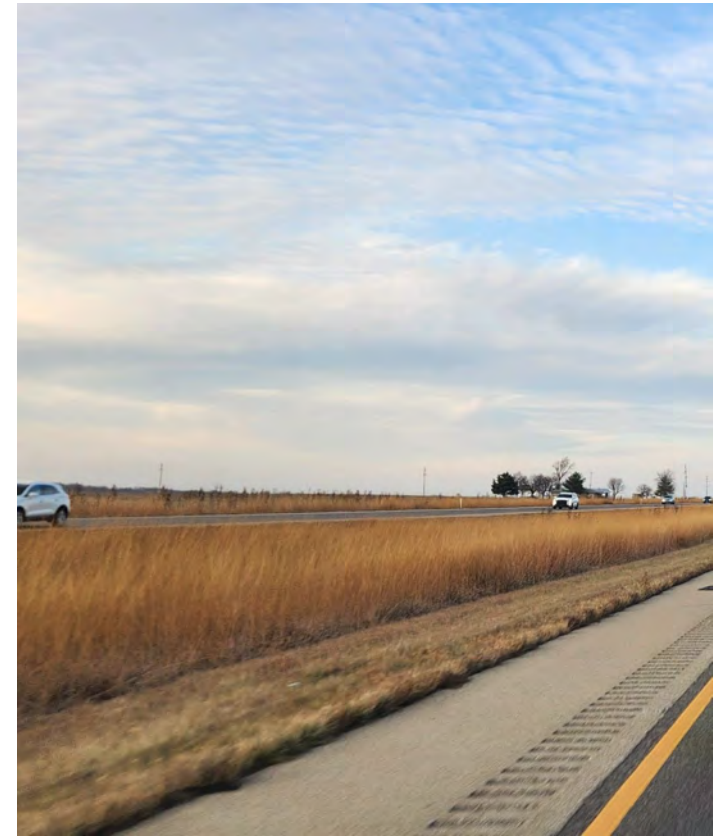




# Opportunities



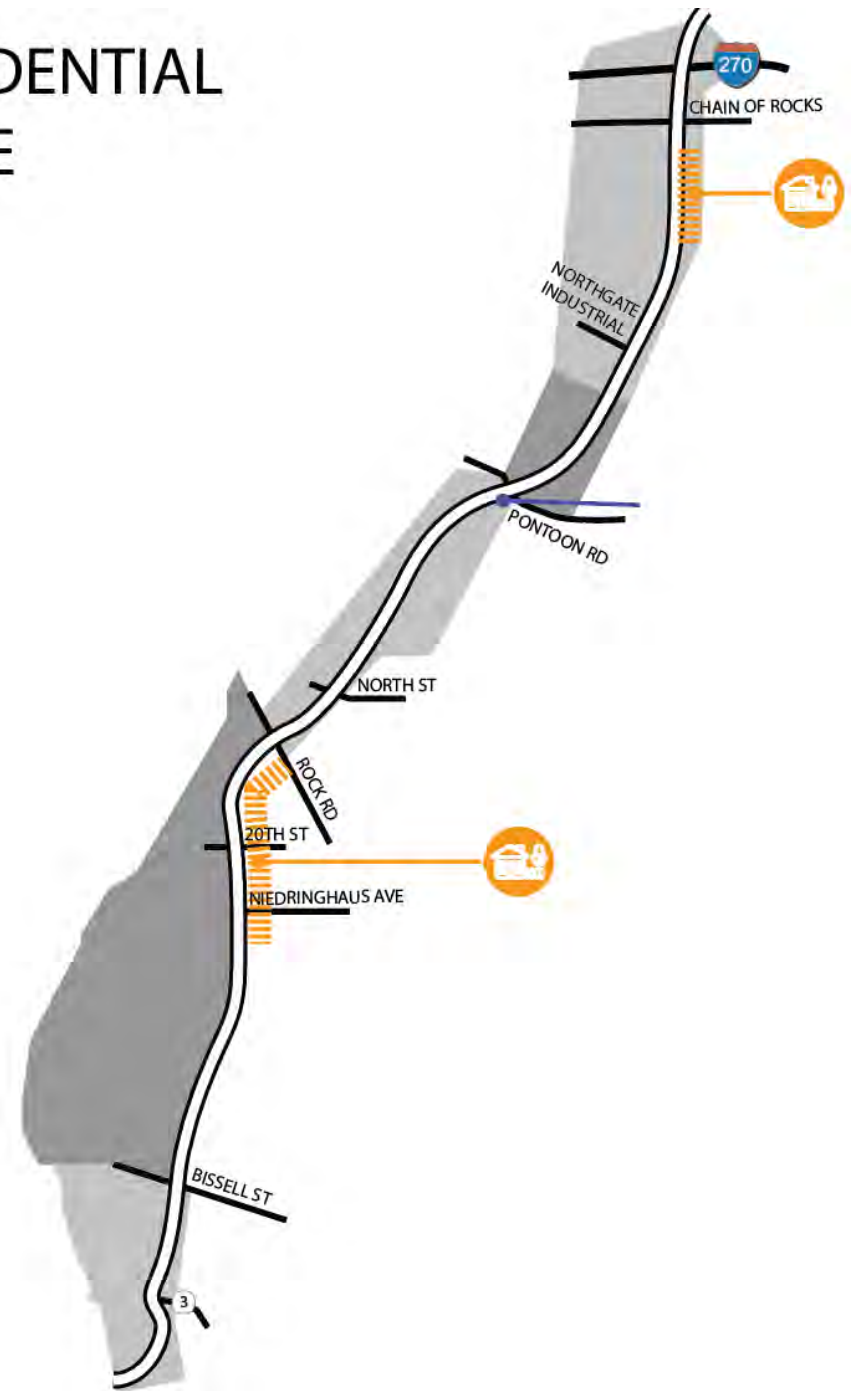
# Opportunities



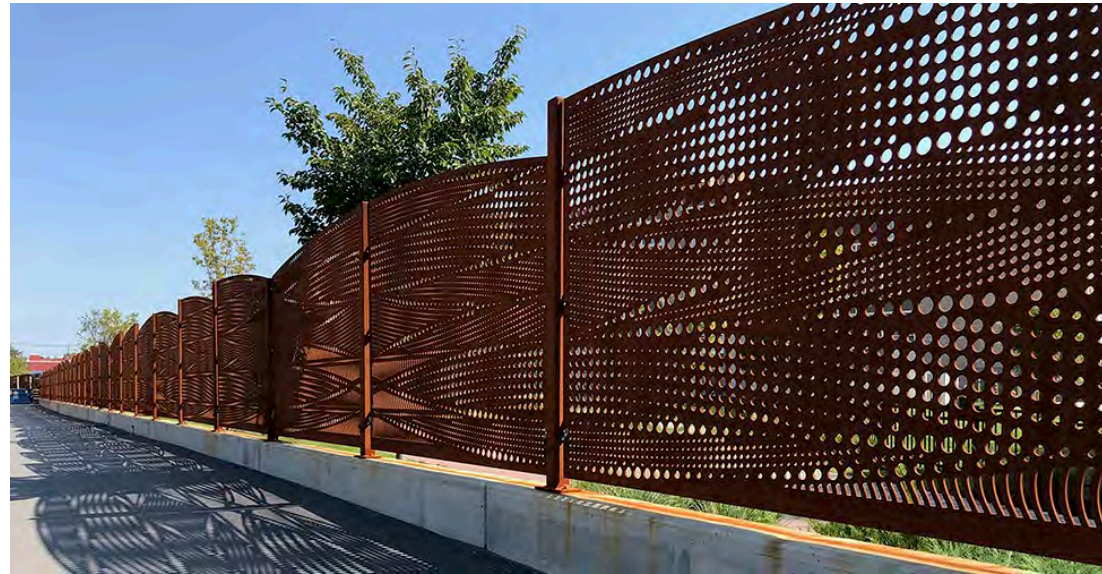
# Opportunities



## RESIDENTIAL EDGE



# Opportunities



# Priority Areas

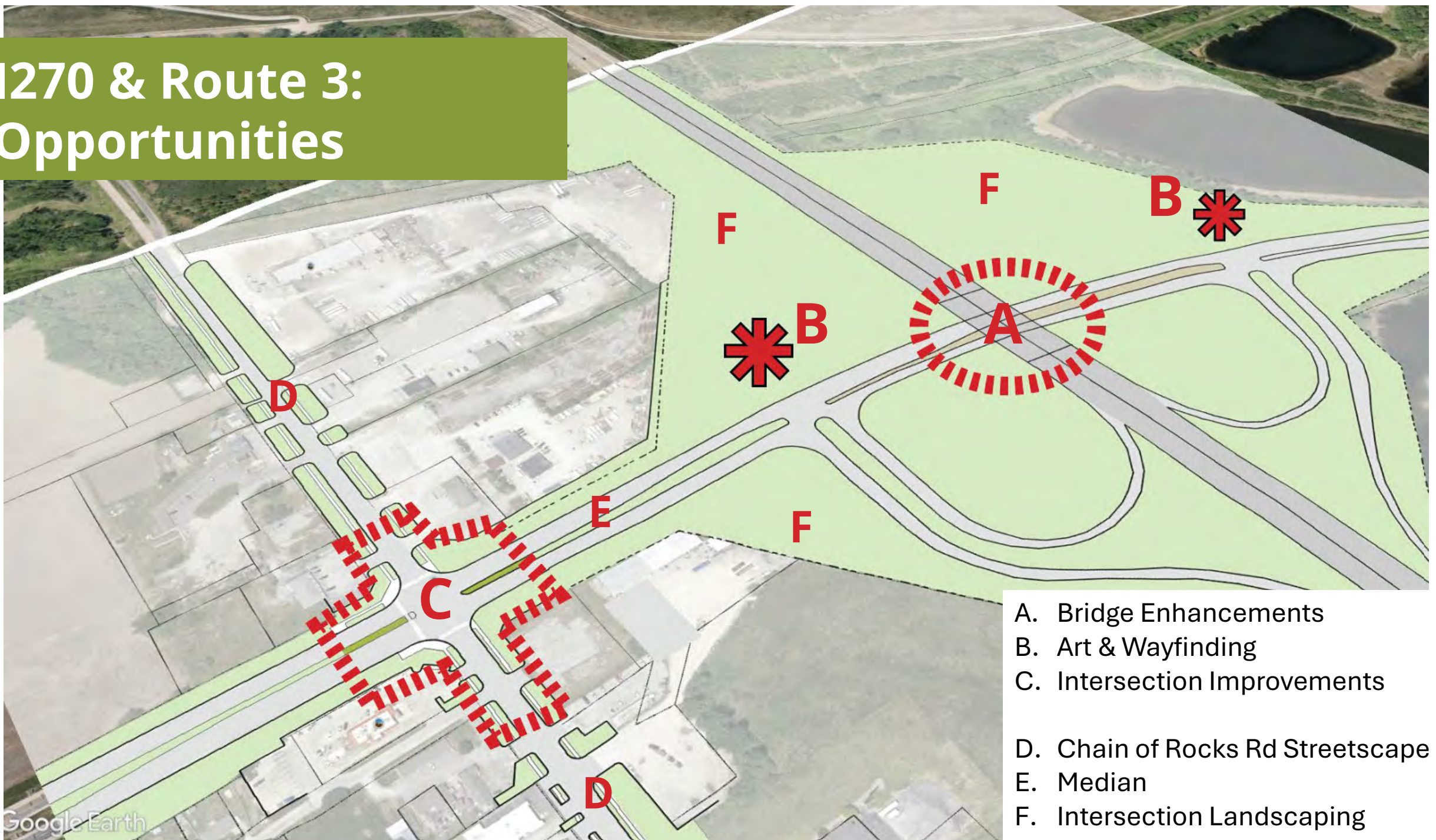
# I270 & Route 3: Existing Conditions



# I270 & Route 3: IDOT Concept



# I270 & Route 3: Opportunities



- A. Bridge Enhancements
- B. Art & Wayfinding
- C. Intersection Improvements
- D. Chain of Rocks Rd Streetscape
- E. Median
- F. Intersection Landscaping



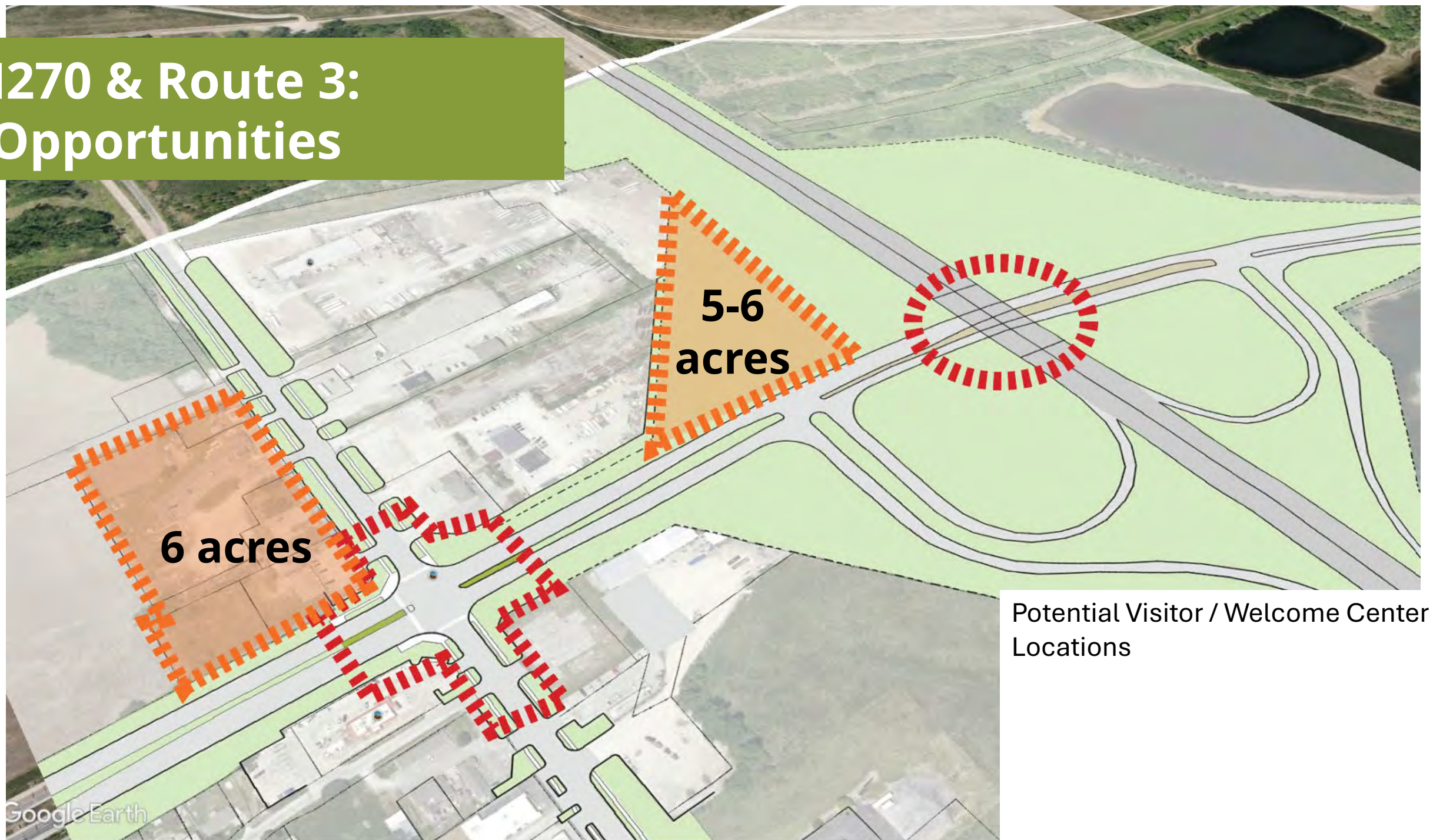
# I270 & Route 3: Bridge Precedents

I-57 at Champaign



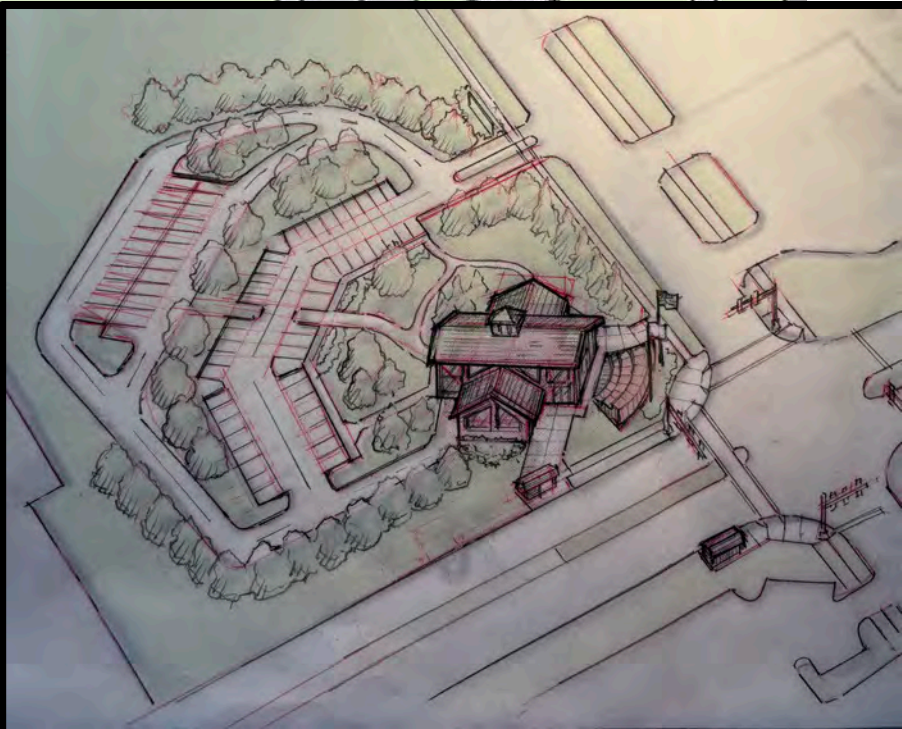
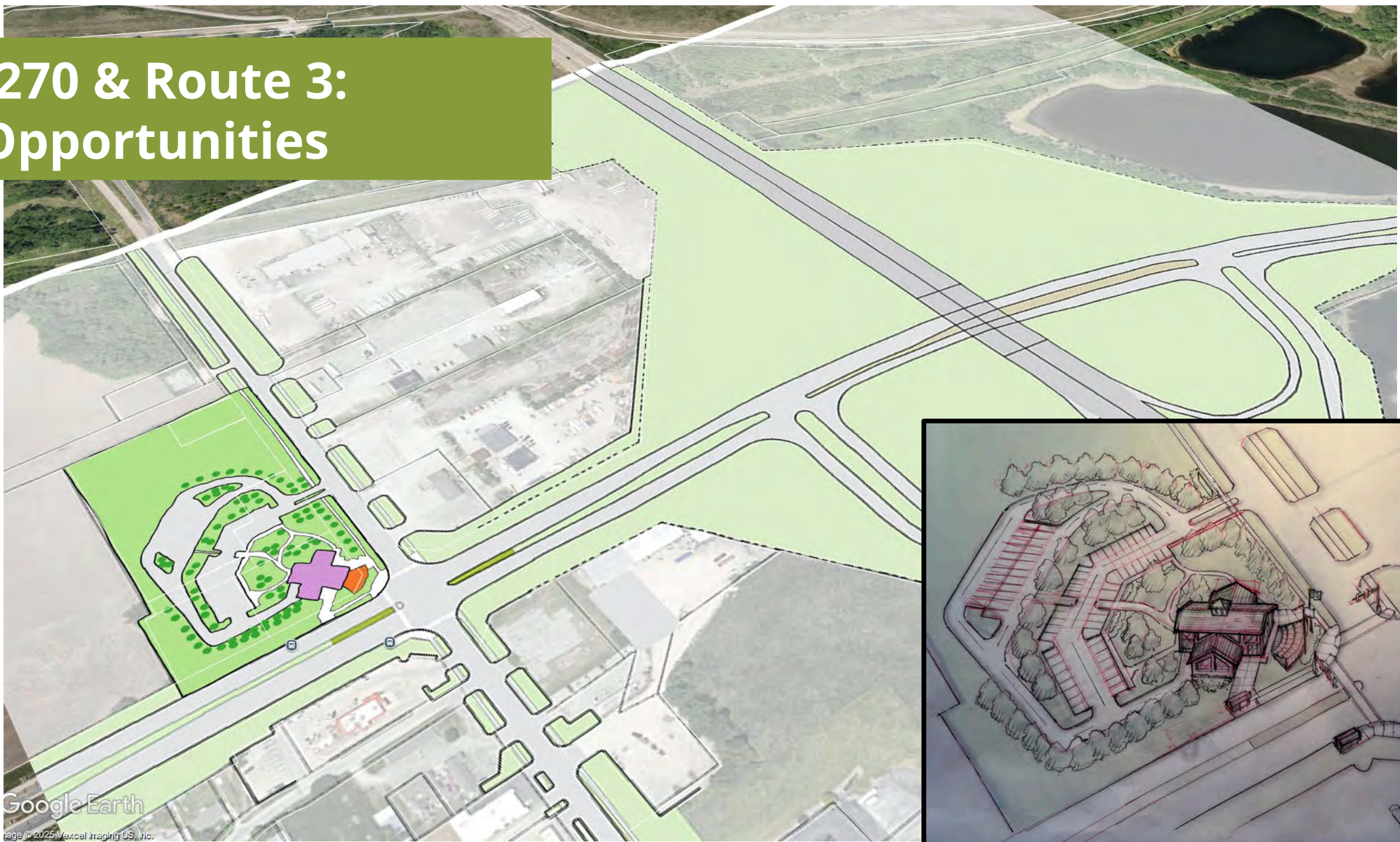
I-55 at  
Bolingbrook

# I270 & Route 3: Opportunities

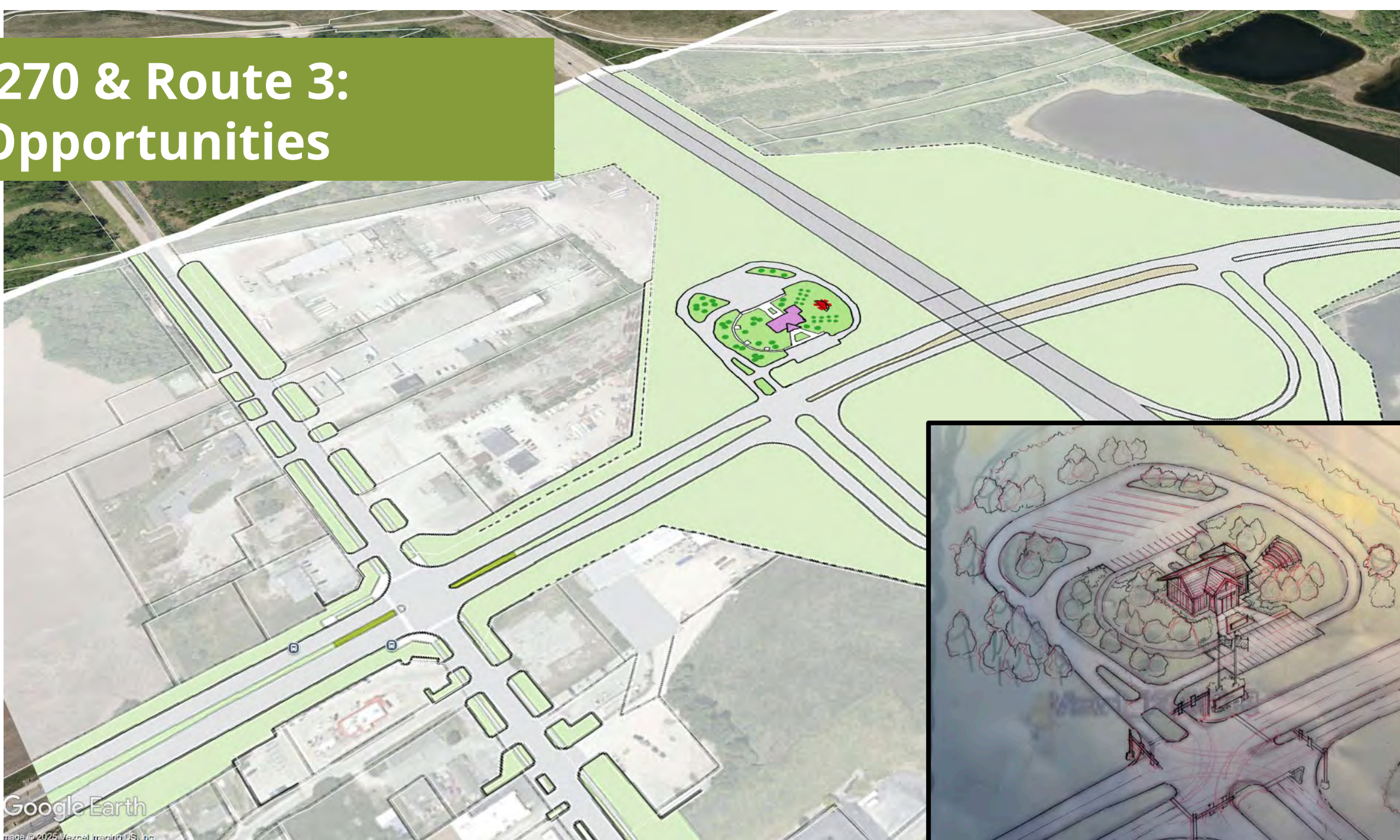


Potential Visitor / Welcome Center  
Locations

# I270 & Route 3: Opportunities



# I270 & Route 3: Opportunities



## Discussion and Questions

- Art Working Committee
- Committee “Homework”
- Next Advisory Committee Meeting

**Thank You!**

**[www.aRT3Plan.com](http://www.aRT3Plan.com)**