

MEETING SUMMARY

aRT3 Planning Study

Meeting Date: Thursday, July 11, 2024
8:15 am



Location: America's Central Port
1635 West 1st Street, Granite City, IL 62040

Purpose: Advisory Committee Meeting #1

AGENDA *(See Presentation for Content)*

A. Welcome and Introductions

B. Existing Conditions

- Jobs
- Tourism
- Communities
- Transportation

C. Overview of aRT3 Planning Scope

- "Spot Improvements to Complete Reconstruction"
- Outcomes of the Plan
- Elements of the Plan
 - Transportation Improvements Plan
 - Enhancements and Art Master Plan
 - Implementation Strategy
- Planning Schedule

D. Resolutions of Support

E. What We Heard from One-on-One Meetings

F. Updates on Route 3 Projects and Plans

G. Engagement Overview

- Community Pop-ups
- Corridor Businesses and Property Owners

H. Discussion and Questions

Committee Discussion and Feedback

As part of introductions, attendees were asked to share: "One thing they would change to make Route 3 safer." Summary of responses included:

- Intersections: Improve the design and management of intersections. Consider reducing the number of stoplights. Facilitate better traffic flow and manage intersections more effectively.
- Enforcement: Increase police presence and strengthen traffic enforcement measures.
- Distracted Driving: Address issues related to distracted driving.
- Road Conditions: Improve pavement quality.
- Traffic Calming: Slow down driving traffic and reduce distracted.
- Bike and Pedestrian Access: Improve access to trails, like the Confluence Trail, and ensure safer connections for bikers and pedestrians.

As part of introductions, attendees were asked to share: "One thing they would change to improve the image of Route 3." Summary of responses included:

- Transit Enhancements: Improve bus stops, potentially adding covered stops, and collaborate with nearby bike trails. Address safety issues and enhance the overall area appearance.
- Maintenance and Cleanliness: Increase efforts in mowing, trash pickup, and reducing litter.
- Landscaping: Enhance landscaping efforts.
- Public Art: Introduce public art to improve the visual appeal.
- Community Image: Respect the industrial heritage of the corridor, but also look for opportunities to celebrate other images of the community.
- Pavement and Road: Improve pavement quality and patch potholes to enhance the overall image. Address debris falling off trucks.

As part of reviewing the transportation improvements scope, attendees were asked to share other transportation concerns or needs. Summary of responses included:

Speed of Traffic: Anecdotal observations of vehicular speeds along the corridor are 10 mph over the posted speed limit. Some sections see 65mph plus with 75mph plus not uncommon.

Intersections: A review of crash data shows that most crashes occur at intersections. Specific concerns mentioned by attendees:

- Traffic on side streets to Route 3 often edges out into traffic.
- Left turn yield at the Pontoon Road intersection.
- Lack of good visibility at the North Street intersection.
- Vehicles run the light at Rock Road frequently.
- Trucks coming over the overpass near Port when they can't (or don't) stop, will blow on the horn to run intersection.

Ideas: The need for enforcement was frequently mentioned. Other comments by attendees:

- Even though current traffic signals are timed, could the timing be better adjusted?
- Would lowering the speed make traffic flow more efficient (and safer)? People (truckers) would rather drive the distance at a slower speed (i.e., 45 mph) than slam on the brakes at intersections.
- IDOT mentioned that while enforcement would be most effective, tools to enhance it could also calm traffic. Road diets and traffic calming would also benefit bikes and pedestrians.

Other items: Further research on the percentage of crashes involving trucks.

As part of reviewing the enhancements and art master plan scope, attendees were asked to share their thoughts on the identity of Route 3. What impression should people driving the corridor come away with about the area they are passing through or visiting?

A key takeaway from the discussion was the wide range of responses. Several attendees mentioned the focus should be on safety and general cleanliness, while other responses mentioned Route 3 as a destination and an opportunity to bring in tourism.

All the responses:

- That it is safe (multiple mentions), including lower speeds and minimal distractions.
- That is well cared for and clean (multiple mentions).
- The identity should be driven by the goals of the comprehensive plans from the communities it passes through.
- Fun – a positive fun vibe.
- You should have a context for where you are – the Mississippi River, natural beauty – don't know how close to the river you are when you are here.
- Art can be a wayfinder.
- Look regionally – Route 66 – for a national/international draw.
- Give people a reason to come.
- Build partnerships and attract people to invest in a corridor (an example of Chesterfield partnering with MoDOT to landscape and maintain I-64 overpasses).
- Tourism/tourist focused – can bring in outside dollars. Fun, memorable, get people coming back.
- Point of entry – a reflection of who we are and what we value (this is an industrial corridor – be proud of it).
- Unlock the development potential.
- Reflects a quality of life.
- Unique and different.
- Continuity in landscape.
- Art should be an extra after safety and cleanliness – resources should be allocated there first.
- Clean and neat.
- The is an industrial corridor and an agricultural corridor. We are proud of our industry.
- Do the communities consider Route 3 their front door, or are the communities more focused on the interior of their communities?
- Attract some retail.
- A destination.
- All tied together.
- This Route 3 corridor is better than other industrial corridors.
- Consider paths or loops that people might travel.
- Encourage people to stop.
- Where art meets industry.
- More welcoming.

Advisory Committee Members (Attending)

Rich Barbee, IDOT
Sam Beelman, Beelman Truck Company
Kirk Brown, IDOT
Rosemarie Brown, Chamber of Commerce Southwestern Madison County
Amy Elik, State Representative 111th District
Erica Harriss, State Senator 56th District
Dennis Heepke, Moreland Properties
Jessica Iberg, Riechmann Transport Inc
Michelle Khani, Dynamic Transit Company
Gwen Lagemann, IDOT
SJ Morrison, Madison County Transit
John Nations, Doster Nations Ullom & Boyle, LLC
Paul Wellhausen
Bryan Werner, Metro East Parks and Recreation District
Brenda Whitaker, Business Owner
Dennis Wilmsmeyer, America's Central Port

America's Central Port (Attending)

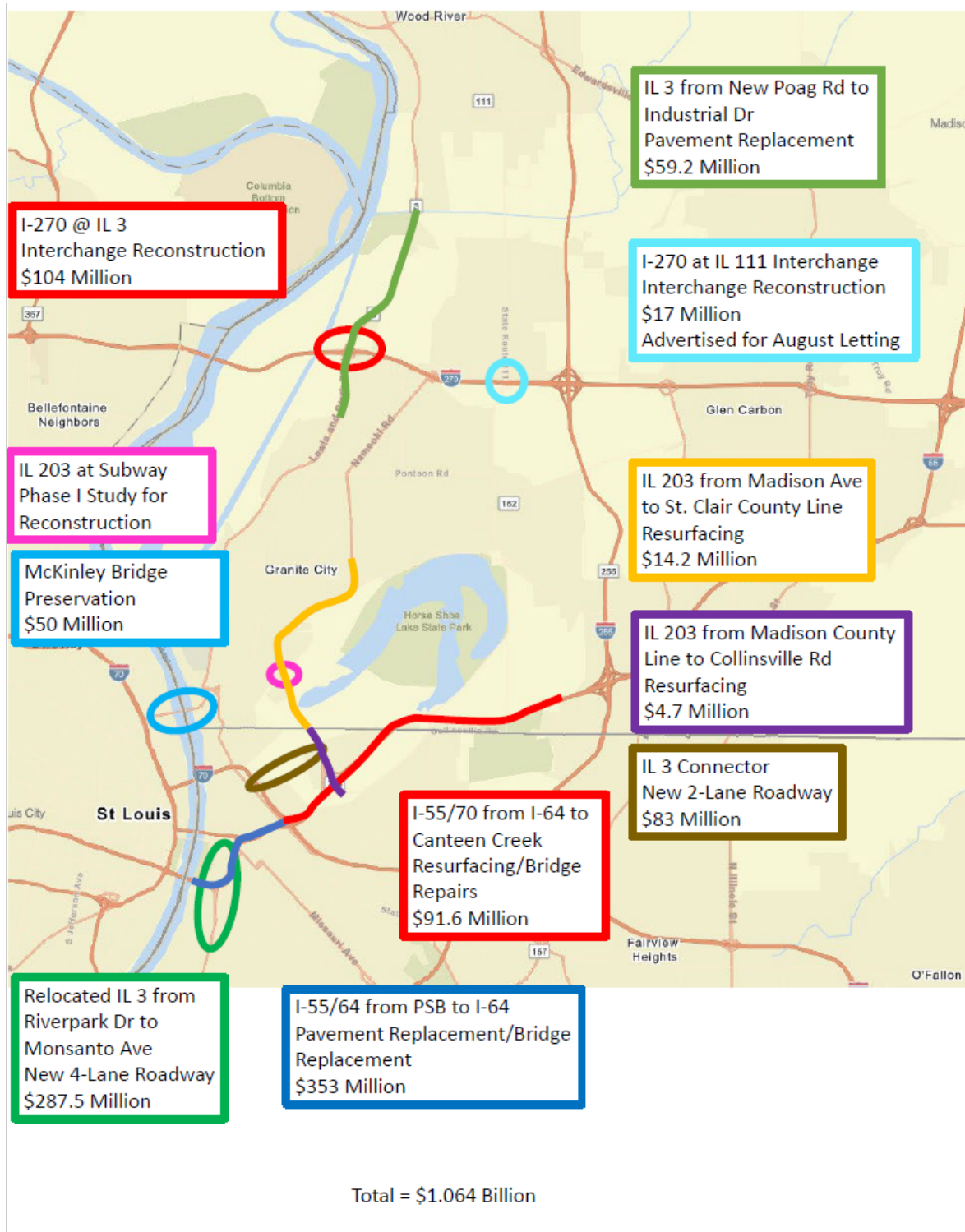
Christie Voelker, America's Central Port

Planning Team (Attending)

Stephen Ibendahl, i5Group
Katie McLaughlin, i5Group
MaryAnn Taylor-Crate, Added Dimension
Kayla Allen, Added Dimension
Tom Cissell, Oates Associates
Meridith McKinley, VIA Partnership

*End of Meeting Summary:
Last updated July 19, 2024, by the i5Group.*

Meeting handout from IDOT:
 Significant Funded Highway Projects Near Granite City



Photos of July 11th Advisory Committee Meeting #1:





aRT3

— PLANNING STUDY —

ADVISORY COMMITTEE MEETING #1

July 11, 2024

Agenda

- A. Welcome and Introductions**
- B. Existing Conditions**
- C. Overview of aRT3 Planning Scope**
- D. Resolutions of Support**
- E. What We Heard from One-on-One Meetings**
- F. Updates on Route 3 Projects and Plans**
- G. Engagement Overview**
- H. Discussion and Questions**

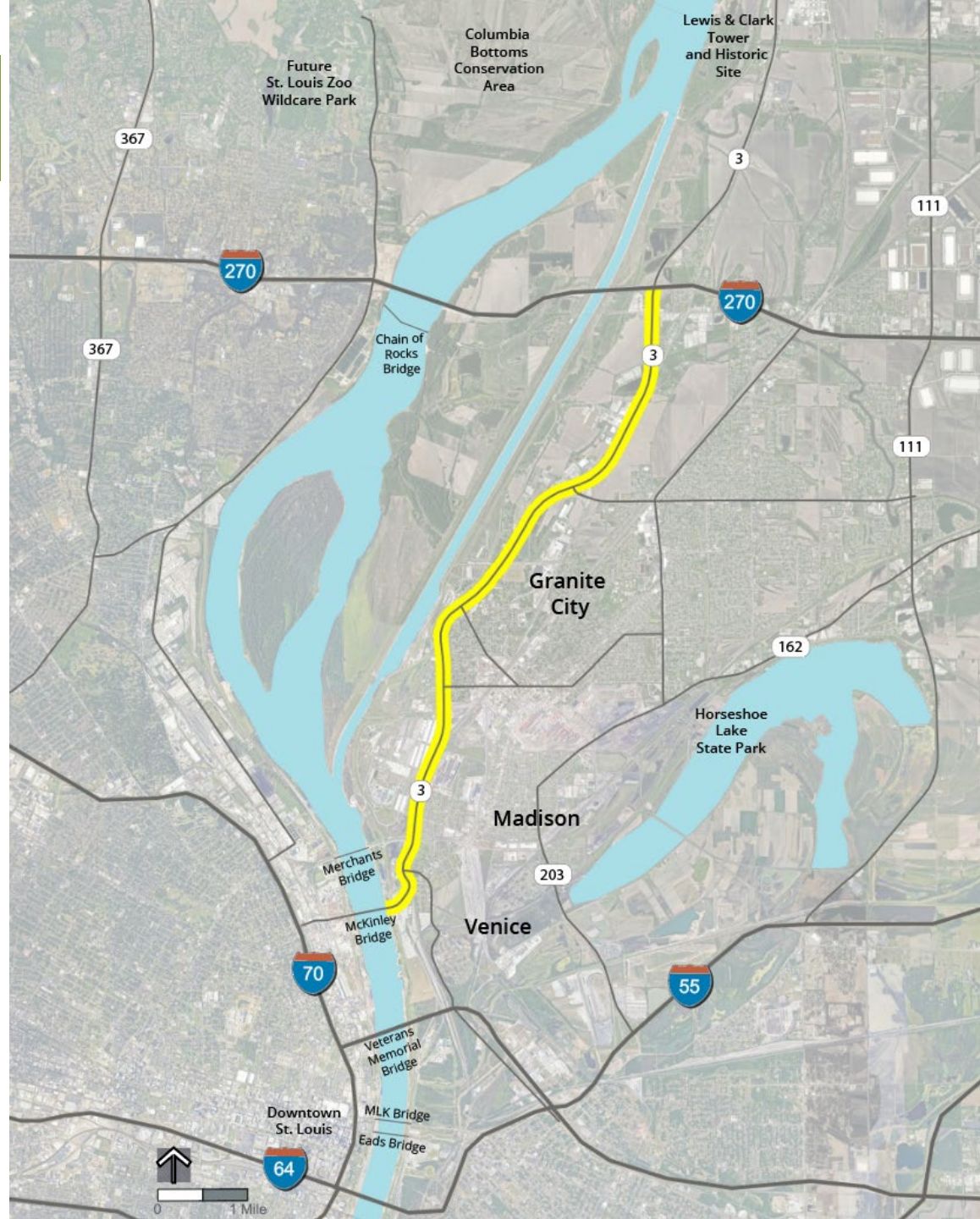
Introductions – Introduce Your Neighbor

- **One thing they would change to make Route 3 safer.**
- **One thing they would change to improve the image of Route 3.**

Existing Conditions

Project Location

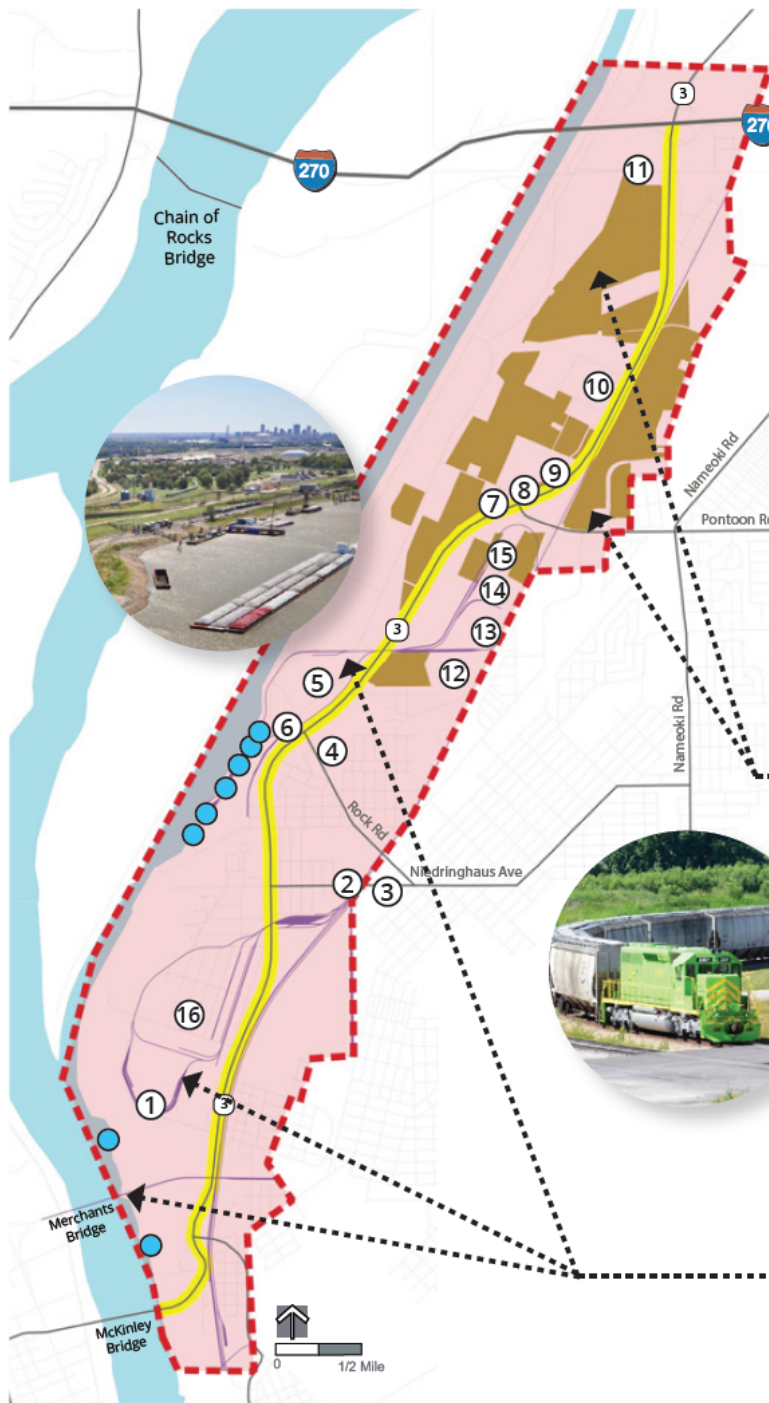
- 8.5-miles of Route 3 from McKinley Bridge to I-270.



Existing Conditions

Jobs

- 4,500 jobs.
- Almost 20% of Madison County manufacturing jobs.



JOB AND MAJOR EMPLOYERS

This segment of Route 3 (highlighted area) has a total of **4,500 jobs** and close to 20% of the total manufacturing jobs in Madison County according to 2021 Census data.

- | | |
|-----------------------------|--|
| ① Green Plains | ⑨ VEGA Transport |
| ② ASF-Keystone/Amsted Rail | ⑩ Northgate Business and Industrial Park |
| ③ Baily International | ⑪ Riechmann Transport |
| ④ Dynamic Transit | ⑫ Kraft Heinz-Granite City |
| ⑤ Friedman Industries, Inc. | ⑬ Wieland Recycling |
| ⑥ Lewis and Clark Marine | ⑭ Precoat Metals- MMC |
| ⑦ Weber Chevrolet - Ford | ⑮ GEODIS Contract Logistics |
| ⑧ Walmart | ⑯ America's Central Port |

FUTURE DEVELOPMENT

The corridor has numerous available sites for future development, especially in the northern part of the corridor.

TRANSPORTATION HUB

The corridor is served by multiple modes of transportation serving the regional economy, including multiple river facilities, railroads, and over 2,500 trucks per day on Route 3. Truck traffic represents almost 20% of all traffic volumes on Route 3.

— Railroads

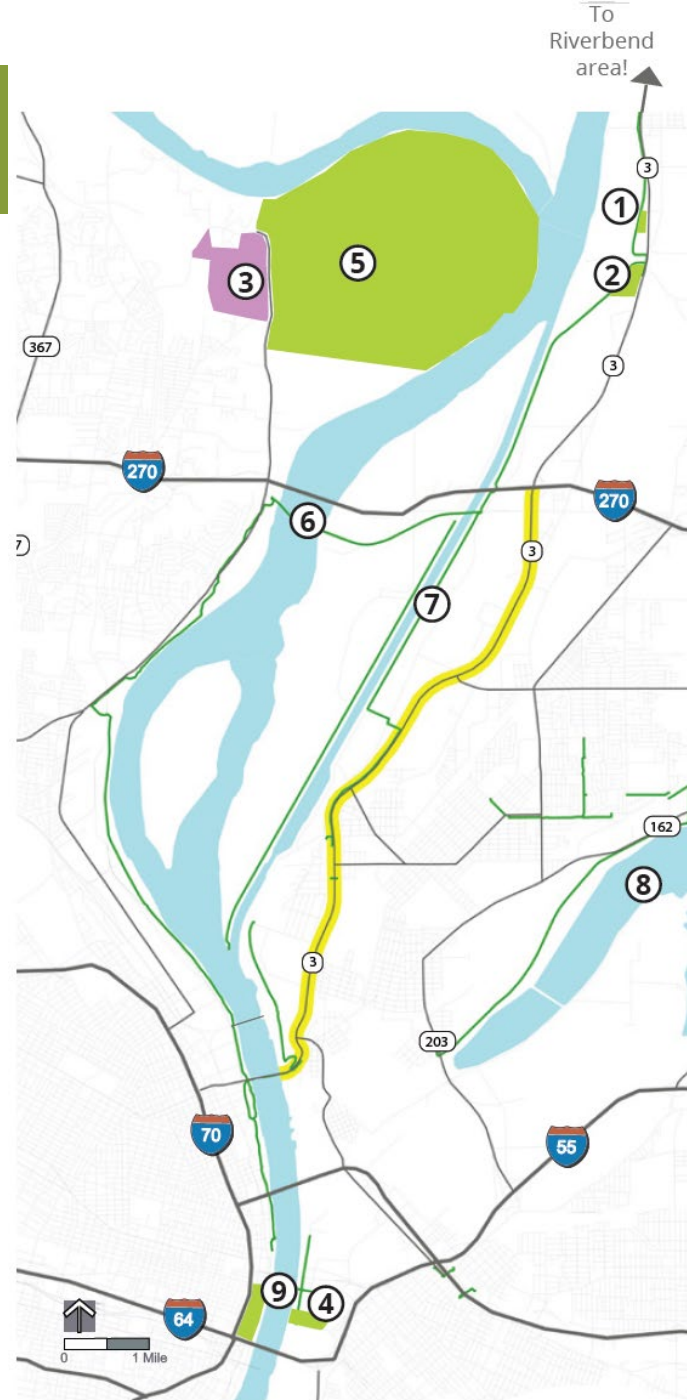
● River Terminals and Docks

■ Potential Areas of Future Development

Existing Conditions

Tourism

- Link to Illinois and Missouri destinations.

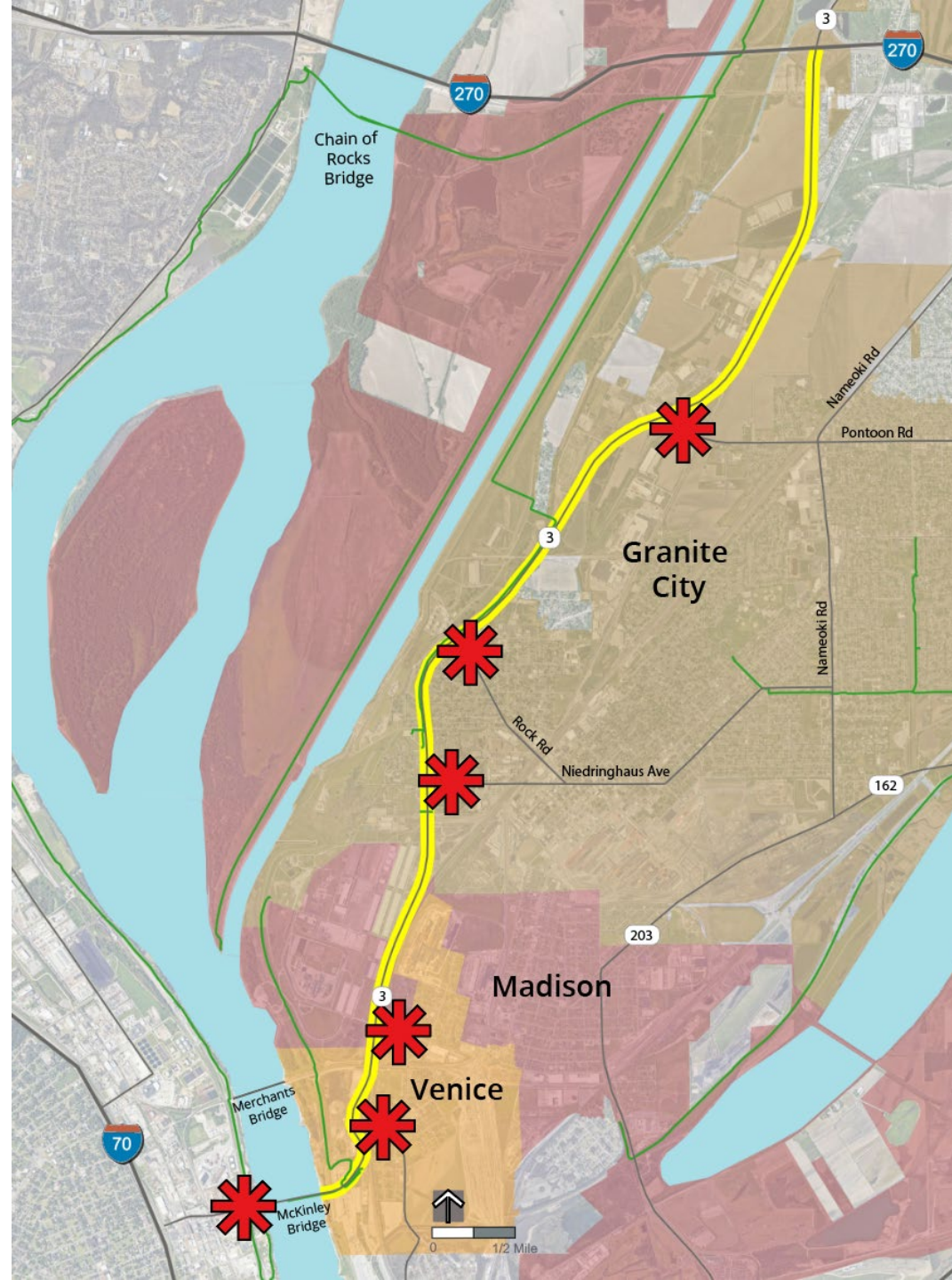


- 7 MCT Confluence Multi-Use Trail
- 8 Horseshoe Lake State Park
- 9 Gateway Arch National Park

Existing Conditions

Existing Communities

- Granite City, Madison, and Venice have a combined population exceeding 32,000.



Existing Conditions

Transportation

- 10,000 – 15,000 average vehicles/day.
- Almost 20% truck traffic.



Heat Map of Crash Data (2017-2019)

- 270 crashes.
 - *Fatal: < 1%*
 - *Injury: 38%*
 - *Property Damage: 62%*
- Top 3 Causes
 - *Failing to Yield Right of Way*
 - *Failing to Reduce Speed to Avoid Crash*
 - *Disregarding Signs/Signals/Markings*

Existing Conditions

Existing Art



Overview of aRT3 Planning Scope

- "Spot Improvements to Complete Reconstruction"
- Outcomes of the Plan
 - Enhance the image of Route 3.
 - Improved transportation safety along Route 3.
 - Attract infrastructure funding for Route 3 improvements.
 - Foster economic development and job creation.
- Elements of the Plan
 - Transportation Improvements Plan
 - Enhancements and Art Master Plan
 - Implementation Strategy
- Planning Schedule

Types of Enhancements



Landscape



Infrastructure



Art / Sculpture

Planning Schedule

Advisory Committee

- Up to five (5) meetings

Corridor Business and Property Owners Meeting #1

- Late Oct/Early Nov

Community Pop-ups

- Fall 2024 (October)

Spring/Summer 2024

Planning Process Kickoff
Formation of Stakeholder-Advisory Committee
Collect Corridor Data
Begin Transportation Improvements Plan

Fall 2024

Preliminary Transportation Improvements Plan
Development of Corridor Aesthetic Themes and Principles

- * Corridor Business and Property Owners Meeting #1
- * Community Pop-up Engagement Events

Winter 2024/2025

Final Transportation Improvements Plan
Begin Enhancements and Art Master Plan

Spring 2025

Preliminary Enhancements and Art Master Plan
* Art Working Group

- * Corridor Business and Property Owners Meeting #2

Summer/Fall 2025

Final Enhancements and Art Master Plan
Public Open House *
Implementation Strategy
Resolutions of Support

IMPLEMENTATION!

Resolutions of Support

Role of the Advisory Committee

- Resolutions of Support
- “Ad-Hoc” Committee
- Sounding Board for Planning Team
- Project Champions

What We've Heard to Date

- Importance of Route 3 as a Freight Corridor
- Concerns about Traffic Safety - Especially at the Intersections
- Balancing Local Community Needs with Regional Needs
- Multiple Ongoing and Upcoming Projects and Plans
- The Need for Route 3 Investment
- Opportunity of the I-270 and Route 3 Interchange
- Aesthetics are Important ("Front Door")
 - But different opinions on the extent and type of enhancements.
 - Determining funding and maintenance.

Updates on Route 3 Projects and Plans

- IDOT
- MCT
- Others

Engagement Overview

Corridor Business and Property Owners Meetings

- Meeting #1 - Late Oct/Early Nov
- Meeting #2 - Spring 2025

Community Pop-ups

- Fall 2024 (October)

Open House

- Summer 2025



Photo: Added Dimension pop-up event.

Discussion and Questions

- Next Advisory Committee Meeting:
Late September

Thank You!

www.aRT3Plan.com